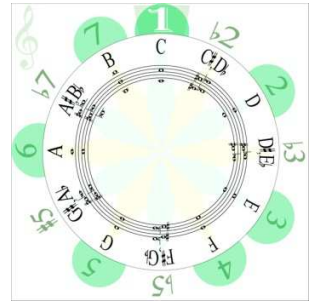


C MELODIC MINOR

Notes in this key; (C, D, E \flat , F, G, A, B)

In the open range (within the first four frets), the C melodic minor scale can be played from C to C in one octave range.



Notes –

- The key of C melodic minor has only one flat E \flat .

THREE-PART HARMONY

- Major Chords

F Major – constructed with notes F, A, C

G Major – constructed with notes G, B, D

- Minor Chords

c minor – constructed with notes C, E \flat , G

d minor – constructed with notes D, F, A

- Minor Flat Five Chords

Am \flat 5- constructed with notes A, C, E \flat

Bm \flat 5 – constructed with notes B, D, F

- Augmented Chord

E \flat +5 – constructed with notes E \flat , G, B

FOUR-PART HARMONY

- Dominant Seventh Chords

F7- constructed with notes F, A, C, E \flat

G7 – constructed with notes G, B, D, F

- Minor Seventh Chord

d min7 – constructed with notes D, F, A, C

- Minor Major Seventh Chord

cm Maj7 – constructed with notes C, E \flat , G, B

- Minor Seven Flat Five Chords

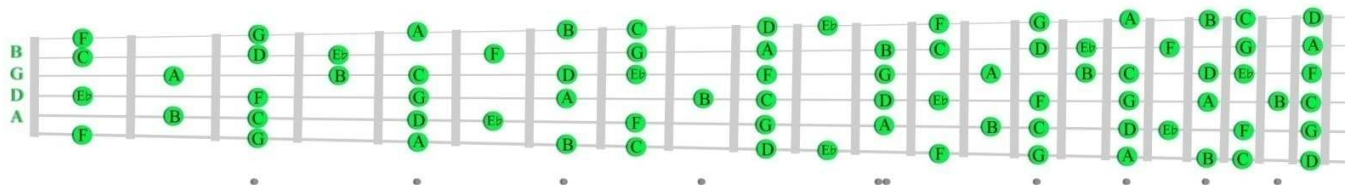
Am7 \flat 5- constructed with notes A, C, E \flat , G

Bm7 \flat 5 – constructed with notes B, D, F, A,

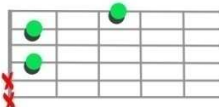
- Major Seven Flat Five Chord

E \flat Maj7+5 – constructed with notes E \flat , G, B, D

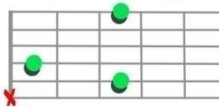
Key of c melodic minor



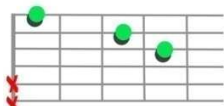
c minor



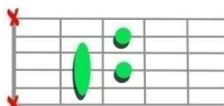
cm Maj⁷



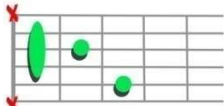
Bm^b5



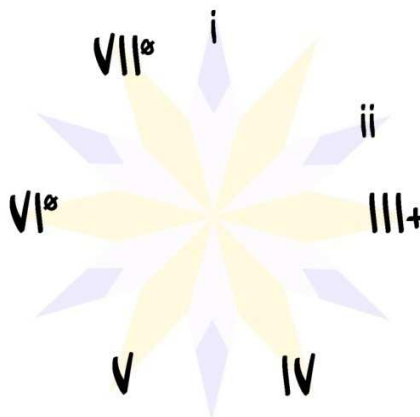
Bm⁷^b5



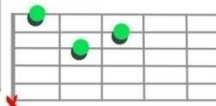
Am^b5



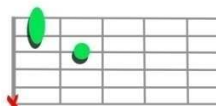
Am⁷^b5



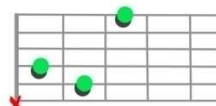
d minor



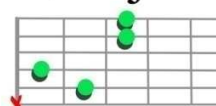
d min⁷



E^b+



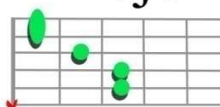
E^bMaj⁷+5



G Major



F Major



G⁷



F⁷



ALL OF THE CHORDS
IN THE KEY OF
C MELODIC MINOR

Bmb5	B7-5
B-5	B7+5
B+	B-9+5
Bm7b5	B-9-5

Amb5
Am7b5
Am7b5sus4

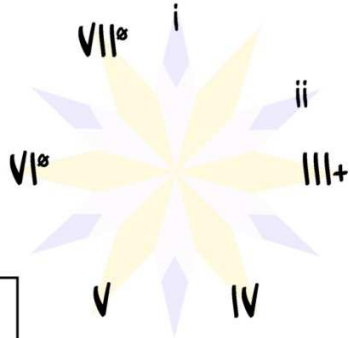
G5	G add9
G Major	G7+5
Gsus	G9
Gsus2	G9+5
G+	G11
G2	G add11
G7	G7add11
G7sus	

C5	cm6
c minor	cm add9
Csus	cm Maj9
Csus2	c m6/9
cm Maj7	cm add11

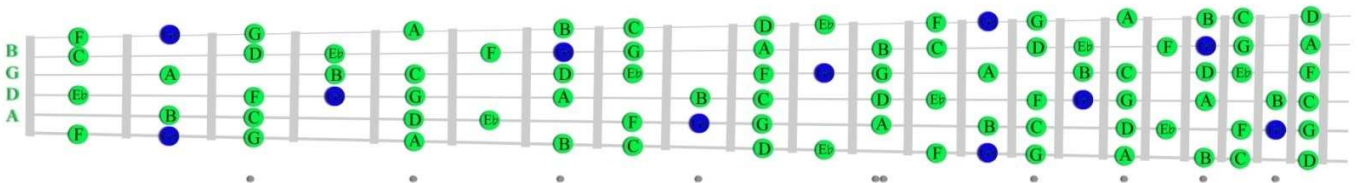
D5
d minor
Dsus
D7sus
d m7
d m6
dm add11
dm addb9
dm7 add11

Eb+
Eb -5
Eb Maj7-5
Eb Maj7+5

F5	F6	F 7/13
F Major	F add9	F9-5
Fsus2	F7-5	F +11
F -5	F9	F 9/6
F2	F 6/9	F13+11
F7	F 7/6	



C Melodic Minor Blues (add the note Gb in c melodic minor mode)



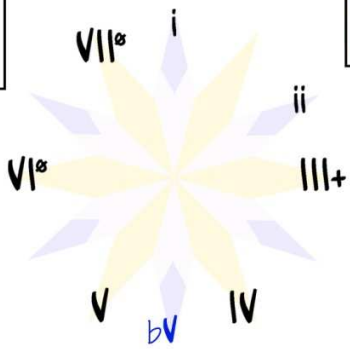
ALL OF THE CHORDS USING THE BLUE
NOTE Gb IN C MELODIC MINOR BLUES

B5	B 7+9
B Major	B 7-9
b minor	B -9+11
B7	B addb9
b m7	bm addb9

C mb5
C dim7

D Major	D 7/6
D6	D 7/13
D7	D 7-9
D add11	D 7+9
D add b9	D 11-9
D7 add11	D 13-9

A dim7



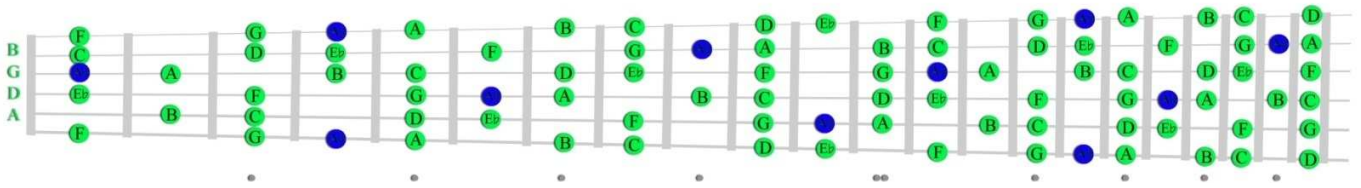
Eb mb5
Eb dim7

G Maj7
G Maj7+5
G Maj9
GMaj7 add11
G Maj11

Gb mb5
Gb dim7

F 7-9
F -9-5
F addb9
F -9+11
F 13-9+11

D Dorian $b2$ Blues (add the note A_b in d dorian $b2$ mode)

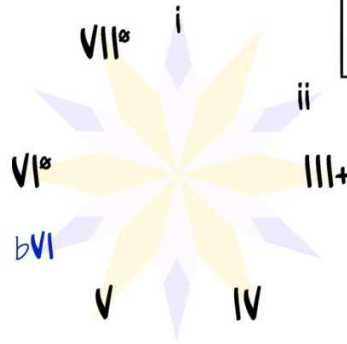


ALL OF THE CHORDS THAT CAN BE CONSTRUCTED USING THE BLUE NOTE A_b IN D DORIAN $b2$ BLUES

B dim7

D $mb5$
D dim7
D $m7b5$
D $m7b5sus4$

A_b5	A_b6
A_b Major	ab m6
ab minor	A_b dim7
A_b $mb5$	A_b Maj7-5
A_b -5	A_b $addb9$
A_b Maj7	abm $addb9$
abm Maj7	



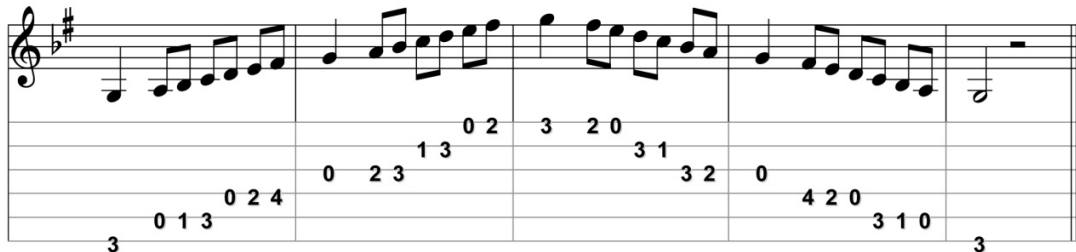
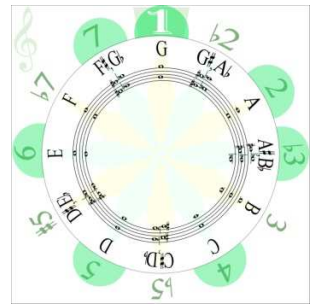
G $addb9$	G -9+5
G 7-9	G 11-9

f minor	fm $add9$	fm 6/9
F $mb5$	F dim7	F 7+9
f m6	Fm7 $b5$	
f m7	f m9	

G MELODIC MINOR

Notes in this key; (G, A, B \flat , C, D, E, F \sharp)

In the open range (within the first four frets), the G melodic minor scale can be played from G to G in two octaves.



Notes –

- The key of G melodic minor has one sharp and one flat; F \sharp , B \flat

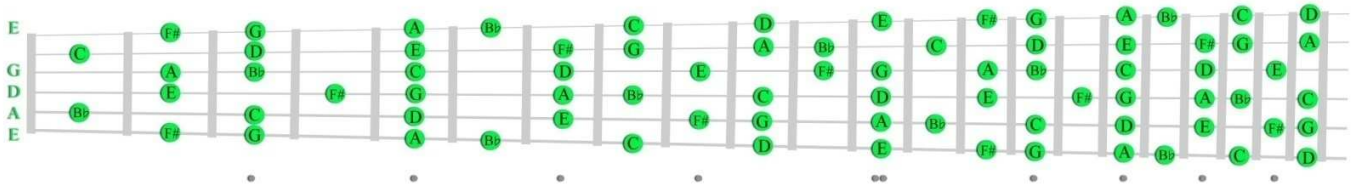
THREE-PART HARMONY

- Major Chords
 - C Major – constructed with notes C, E, G
 - D Major – constructed with notes D, F \sharp , A
- Minor Chords
 - g minor – constructed with notes G, B \flat , D
 - a minor – constructed with notes A, C, E
- Minor Flat Five Chords
 - Em \flat 5- constructed with notes E, G, B \flat
 - F \sharp m \flat 5 – constructed with notes F \sharp , A, C
- Augmented Chord
 - B \flat +5 – constructed with notes B \flat , D, F \sharp

FOUR-PART HARMONY

- Dominant Seventh Chords
 - C7- constructed with notes C, E, G, B \flat
 - D7 – constructed with notes D, F \sharp , A, C
- Minor Seventh Chord
 - a min7 – constructed with notes A, C, E, G
- Minor Major Seventh Chord
 - gm Maj7 – constructed with notes G, B \flat , D, F \sharp
- Minor Seven Flat Five Chords
 - Em7 \flat 5- constructed with notes E, G, B \flat , D
 - F \sharp m7 \flat 5 – constructed with notes F \sharp , A, C, E
- Major Seven Flat Five Chord
 - B \flat Maj7+5 – constructed with notes B \flat , D, F \sharp , A

Key of g melodic minor



		<p>g minor</p>	
		<p>gm Maj⁷</p>	
<p>F#m^b5</p>			<p>a minor</p>
<p>F#m⁷b5</p>			<p>a min⁷</p>
<p>Em^b5</p>			<p>B^b+</p>
<p>Em⁷b5</p>			<p>B^bMaj⁷+5</p>
<p>D Major</p>		<p>C Major</p>	
<p>D⁷</p>		<p>C⁷</p>	

Modes; g melodic minor, a dorian $b2$, B b Augmented, C Lydian $b7$, D Hindu, e aeolian $b5$, F# Super Locrian

ALL OF THE CHORDS
IN THE KEY OF
G MELODIC MINOR

F#mb5	F#7-5
F# -5	F#7+5
F# +	F# -9+5
F#m7b5	F# -9-5

Emb5
Em7b5
Em7b5sus4

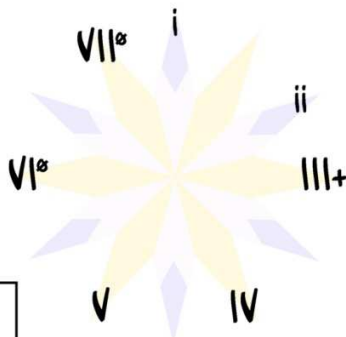
D5	D add9
D Major	D7+5
Dsus	D9
Dsus2	D9+5
D+	D11
D2	D add11
D7	D7add11
D7sus	

G5	gm6
g minor	gm add9
Gsus	gm Maj9
Gsus2	g m6/9
gm Maj7	gm add11

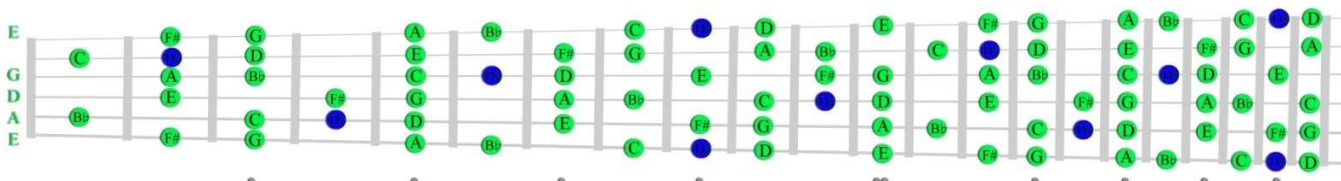
A5
a minor
Asus
A7sus
a m7
a m6
am add11
am addb9
am7 add11

Bb+
Bb -5
Bb Maj7-5
Bb Maj7+5

C5	C6	C 7/13
C Major	C add9	C9-5
Csus2	C7-5	C +11
C -5	C9	C 9/6
C2	C 6/9	C13+11
C7	C 7/6	



G Melodic Minor Blues (add the note D^b in g melodic minor mode)



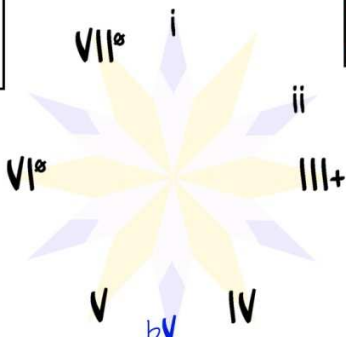
ALL OF THE CHORDS USING THE BLUE
NOTE D^b IN G MELODIC MINOR BLUES

F#5	F# 7+9
F# Major	F# 7-9
f# minor	F# -9+11
F#7	F# addb9
f# m7	f#m addb9

G mb5
G dim7

A Major	A 7/6
A6	A 7/13
A7	A 7-9
A add11	A 7+9
A add b9	A 11-9
A7 add11	A 13-9

E dim7



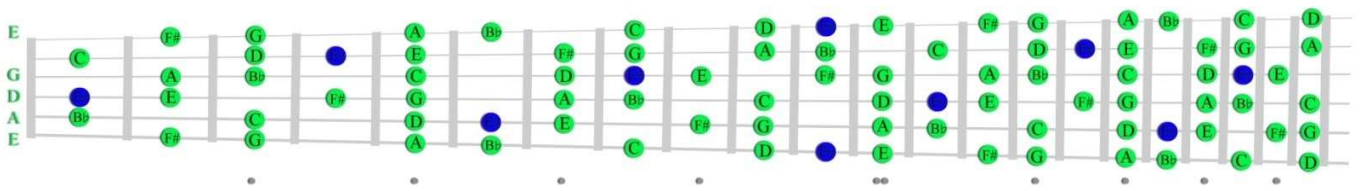
Bb mb5
Bb dim7

D Maj7
D Maj7+5
D Maj9
DMaj7 add11
D Maj11

D ^b mb5
D ^b dim7

C 7-9
C -9-5
C addb9
C -9+11
C 13-9+11

A Dorian $b2$ Blues (add the note E_b in a dorian $b2$ mode)

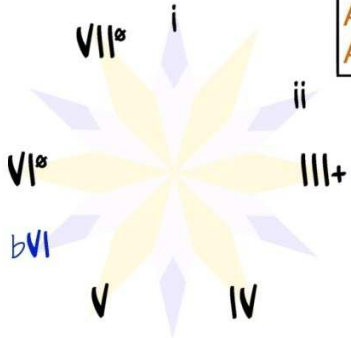


ALL OF THE CHORDS THAT CAN BE CONSTRUCTED USING THE BLUE NOTE E_b IN A DORIAN $b2$ BLUES

F# dim7

A m_b5
 A dim7
 A $m7_b5$
 A $m7_b5sus4$

E_b5	E_b6
E_b Major	$e_b m6$
e_b minor	E_b dim7
$E_b m_b5$	E_b Maj7-5
$E_b -5$	E_b add $b9$
E_b Maj7	$e_b m$ add $b9$
$e_b m$ Maj7	



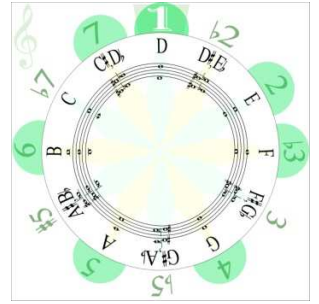
D add $b9$	D -9+5
D 7-9	D 11-9

c minor	cm add9	cm 6/9
C m_b5	C dim7	C 7+9
c m6	Cm7 $b5$	
c m7	c m9	

D MELODIC MINOR

Notes in this key; (D, E, F, G, A, B, C#)

In open range (within the first four frets), the D melodic minor scale can be played from D to D in one octave range.



Notes –

- The key of D melodic minor has only one sharp; C#.

THREE-PART HARMONY

- Major Chords

G Major – constructed with notes G, B, D
A Major – constructed with notes A, C#, E

- Minor Chords

d minor – constructed with notes D, F, A
e minor – constructed with notes E, G, B

- Minor Flat Five Chords

Bm \flat 5- constructed with notes B, D, F
C#m \flat 5 – constructed with notes C#, E, G

- Augmented Chord

F+5 – constructed with notes F, A, C#

FOUR-PART HARMONY

- Dominant Seventh Chords

G7- constructed with notes G, B, D, F
A7 – constructed with notes A, C#, E, G

- Minor Seventh Chord

e min7 – constructed with notes E, G, B, D

- Minor Major Seventh Chord

dm Maj7 – constructed with notes D, F, A, C#

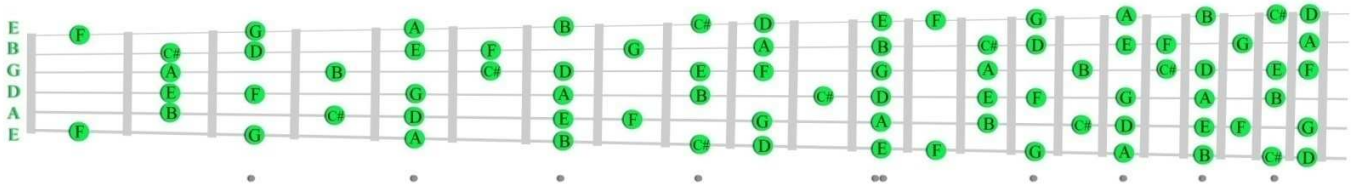
- Minor Seven Flat Five Chords

Bm7 \flat 5- constructed with notes B, D, F, A
C#m7 \flat 5 – constructed with notes C#, E, G, B

- Major Seven Flat Five Chord

FMaj7+5 – constructed with notes F, A, C#, E

Key of d melodic minor



d minor

C#m^b5

C#m⁷b⁵

Bm^b5

Bm⁷b⁵

A Major

A⁷

d minor

dm Maj⁷

e minor

e min⁷

F+

FMaj⁷+5

G Major

G⁷

Modes; d melodic minor, e dorian ^b2, F Augmented, G Lydian ^b7, A Hindu, b aeolian ^b5, C# Super Locrian

ALL OF THE CHORDS
IN THE KEY OF
D MELODIC MINOR

C#mb5	C#7-5
C# -5	C#7+5
C# +	C# -9+5
C#m7b5	C# -9-5

Bmb5
Bm7b5
Bm7b5sus4

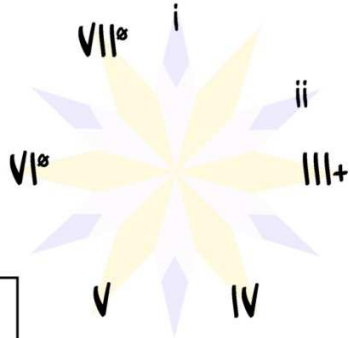
A5	A add9
A Major	A7+5
Asus	A9
Asus2	A9+5
A+	A11
A2	A add11
A7	A7add11
A7sus	

D5	dm6
d minor	dm add9
Dsus	dm Maj9
Dsus2	d m6/9
dm Maj7	dm add11

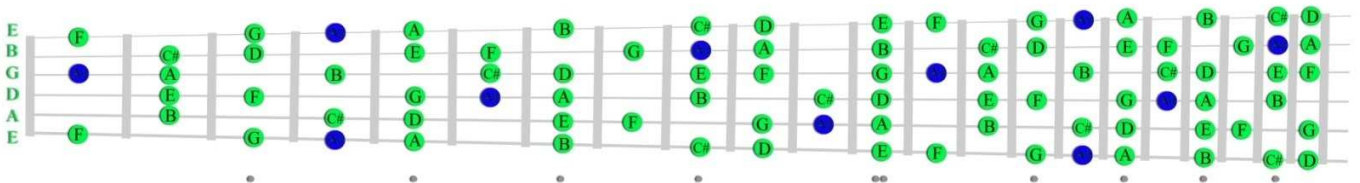
E5
e minor
Esus
E7sus
e m7
e m6
em add11
em addb9
em7 add11

F+
F -5
F Maj7-5
F Maj7+5

G5	G6	G 7/13
G Major	G add9	G9-5
Gsus2	G7-5	G +11
G -5	G9	G 9/6
G2	G 6/9	G13+11
G7	G 7/6	



D Melodic Minor Blues (add the note Ab in d melodic minor mode)



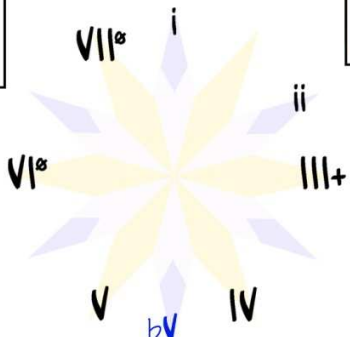
ALL OF THE CHORDS USING THE BLUE
NOTE Ab IN D MELODIC MINOR BLUES

C#5	C# 7+9
C# Major	C# 7-9
c# minor	C# -9+11
C#7	C# addb9
c# m7	c#m addb9

D mb5
D dim7

E Major	E 7/6
E6	E 7/13
E7	E 7-9
E add11	E 7+9
E add b9	E 11-9
E7 add11	E 13-9

B dim7



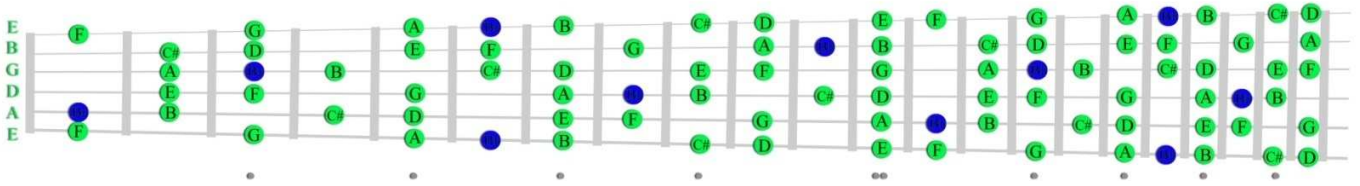
F mb5
F dim7

A Maj7
A Maj7+5
A Maj9
AMaj7 add11
A Maj11

Ab mb5
Ab dim7

G 7-9
G -9-5
G addb9
G -9+11
G 13-9+11

E Dorian $b2$ Blues (add the note Bb in d dorian $b2$ mode)

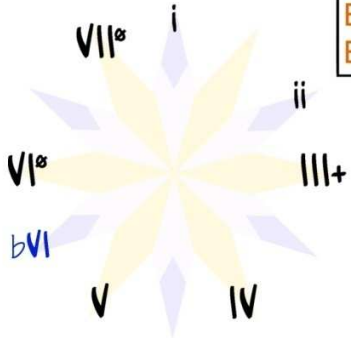


ALL OF THE CHORDS THAT CAN BE CONSTRUCTED USING THE BLUE NOTE Bb IN E DORIAN $b2$ BLUES

$C\#$ dim7

E $mb5$
 E dim7
 E $m7b5$
 E $m7b5sus4$

$Bb5$	$Bb6$
Bb Major	bb m6
bb minor	Bb dim7
Bb $mb5$	Bb Maj7-5
Bb -5	Bb add $b9$
Bb Maj7	bbm add $b9$
bbm Maj7	



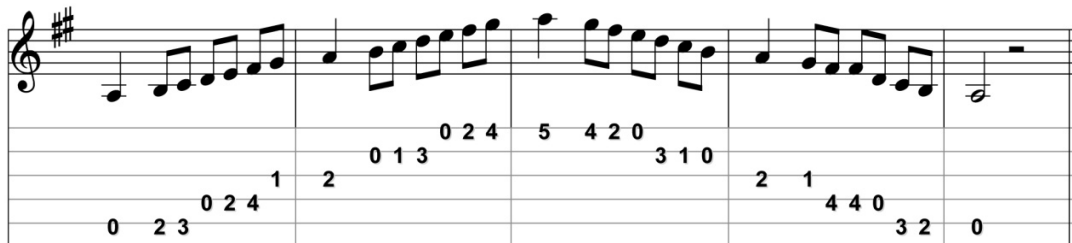
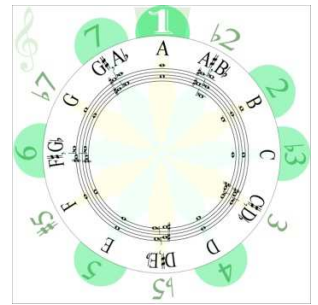
A add $b9$	A -9+5
A 7-9	A 11-9

g minor	gm add9	gm 6/9
G $mb5$	G dim7	G 7+9
g m6	$Gm7b5$	
g m7	g m9	

A MELODIC MINOR

Notes in this key; (A, B, C, D, E, F#, G#)

In the open range (within the first four frets), the A melodic minor scale can be played from A to A in two octaves.



Notes –

- The key of A melodic minor has two sharps; F#, G#

THREE-PART HARMONY

- Major Chords

D Major – constructed with notes D, F#, A

E Major – constructed with notes E, G#, B

- Minor Chords

a minor – constructed with notes A, C, E

b minor – constructed with notes B, D, F#

- Minor Flat Five Chords

F#m $\flat 5$ - constructed with notes F#, A, C

G#m $\flat 5$ – constructed with notes G#, B, D

- Augmented Chord

C+5 – constructed with notes C, E, G#

FOUR-PART HARMONY

- Dominant Seventh Chords

D7- constructed with notes D, F#, A, C

E7 – constructed with notes E, G#, B, D

- Minor Seventh Chord

b min7 – constructed with notes B, D, F#, C

- Minor Major Seventh Chord

am Maj7 – constructed with notes A, C, E, G#

- Minor Seven Flat Five Chords

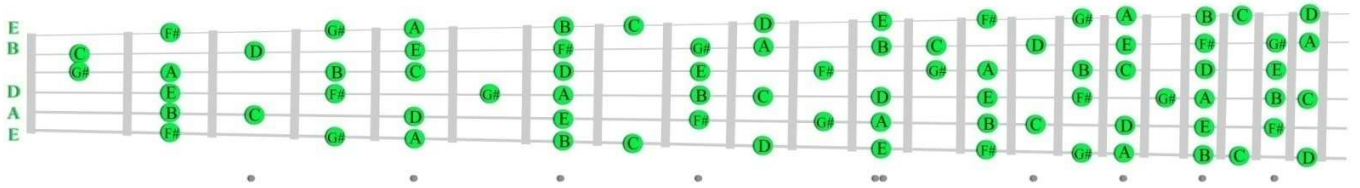
F#m7 $\flat 5$ - constructed with notes F#, A, C, E

G#m7 $\flat 5$ – constructed with notes G#, B, D, F#

- Major Seven Flat Five Chord

CMaj7+5 – constructed with notes C, E, G#, B

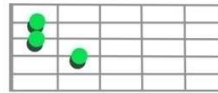
Key of a melodic minor



a minor



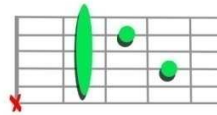
am Maj⁷



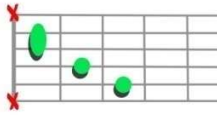
b minor



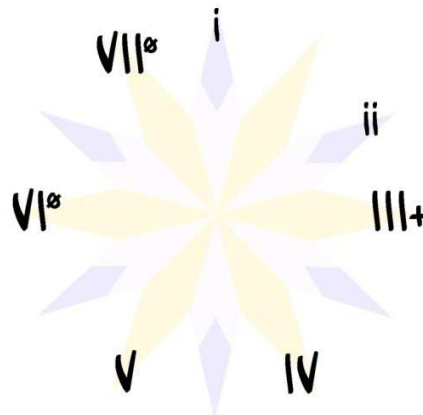
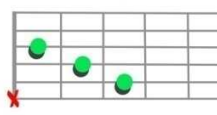
b min⁷



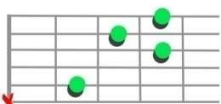
C+



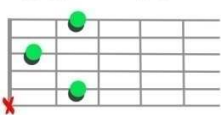
CMaj⁷+5



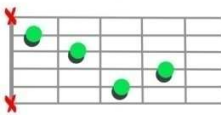
G#m^b5



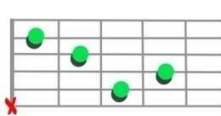
G#m⁷b5



F#m^b5



F#m⁷b5



E Major



D Major



E⁷



D⁷



Modes; a melodic minor, b dorian ^b2, C Augmented, D Lydian ^b7, E Hindu, f# aeolian ^b5, g# Super Locrian

ALL OF THE CHORDS
IN THE KEY OF
A MELODIC MINOR

G#mb5	G#7-5
G# -5	G#7+5
G# +	G# -9+5
G#m7b5	G# -9-5

F#mb5
F#m7b5
F#m7b5sus4

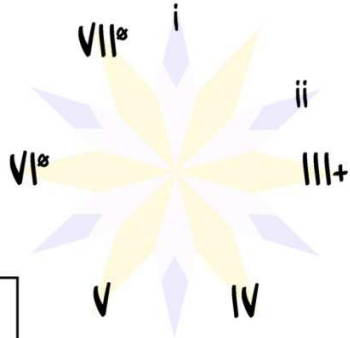
E5	E add9
E Major	E7+5
Esus	E9
Esus2	E9+5
E+	E11
E2	E add11
E7	E7add11
E7sus	

A5	am6
a minor	am add9
Asus	am Maj9
Asus2	a m6/9
am Maj7	am add11

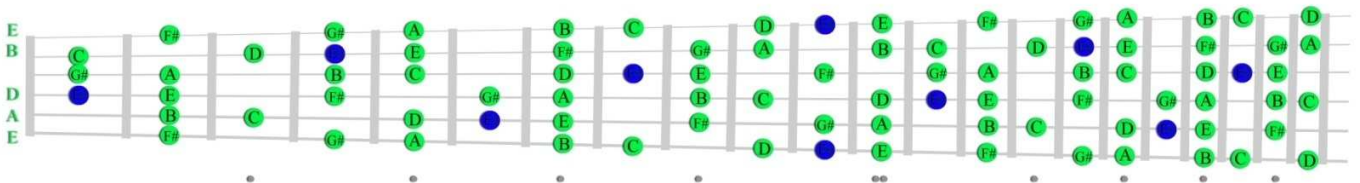
B5
b minor
Bsus
B7sus
b m7
b m6
bm add11
bm addb9
bm7 add11

C+
C -5
C Maj7-5
C Maj7+5

D5	D6	D 7/13
D Major	D add9	D9-5
Dsus2	D7-5	D +11
D -5	D9	D 9/6
D2	D 6/9	D13+11
D7	D 7/6	



A Melodic Minor Blues (add the note Eb in a melodic minor mode)



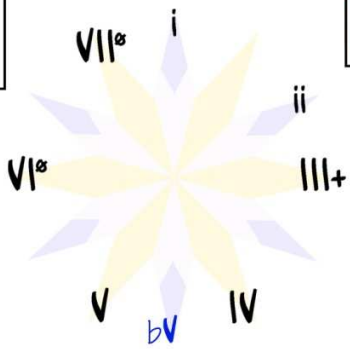
ALL OF THE CHORDS USING THE BLUE
NOTE Eb IN A MELODIC MINOR BLUES

G#5	G# 7+9
G# Major	G# 7-9
g# minor	G# -9+11
G#7	G# addb9
g# m7	g#m addb9

A mb5
A dim7

B Major	B 7/6
B6	B 7/13
B7	B 7-9
B add11	B 7+9
B add b9	B 11-9
B7 add11	B 13-9

F# dim7



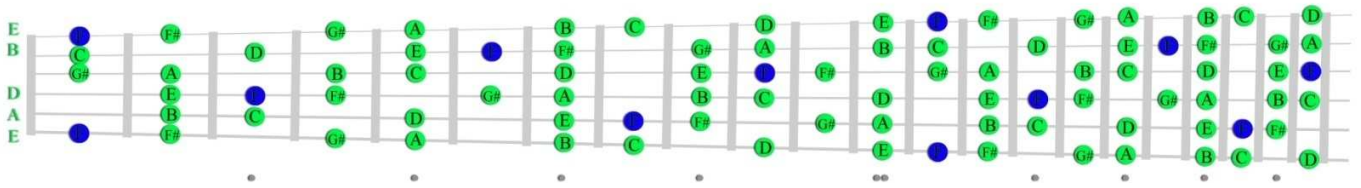
C mb5
C dim7

E Maj7
E Maj7+5
E Maj9
EMaj7 add11
E Maj11

Eb mb5
Eb dim7

D 7-9
D -9-5
D addb9
D -9+11
D 13-9+11

B Dorian $b2$ Blues (add the note $F\sharp$ in b dorian $b2$ mode)

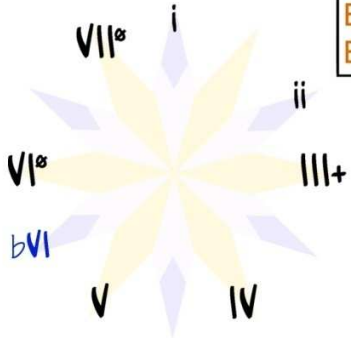


ALL OF THE CHORDS THAT CAN BE CONSTRUCTED USING THE BLUE NOTE $F\sharp$ IN B DORIAN $b2$ BLUES

$G\sharp$ dim7

B $m\flat 5$
 B dim7
 B $m7\flat 5$
 B $m7\flat 5sus4$

F5	F6
F Major	f m6
f minor	F dim7
F $m\flat 5$	F Maj7-5
F -5	F add $\flat 9$
F Maj7	fm add $\flat 9$
fm Maj7	



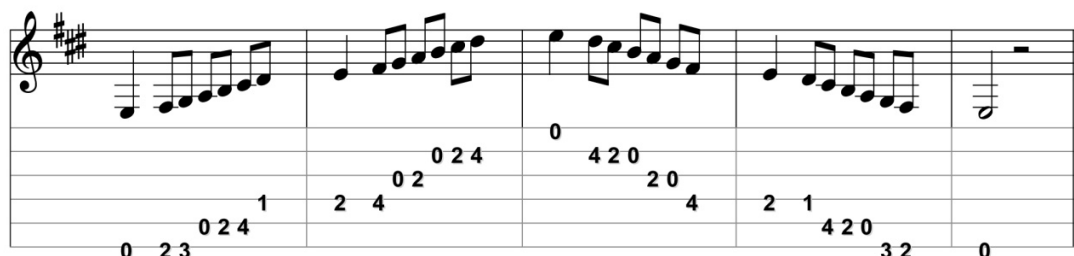
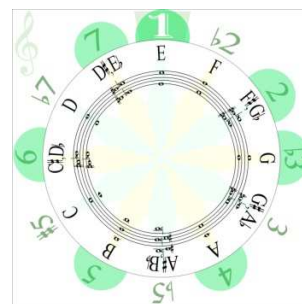
E add $\flat 9$ E -9+5
 E 7-9 E 11-9

d minor	dm add9	dm 6/9
D $m\flat 5$	D dim7	D 7+9
d m6	Dm7 $\flat 5$	
d m7	d m9	

E MELODIC MINOR

Notes in this key; (E, F#, G, A, B, C#, D#)

In the open range (within the first four frets), the E melodic minor scale can be played from E to E in two octaves.



Notes –

- The key of E melodic minor has three sharps; F#, C#, D#.

THREE-PART HARMONY

- Major Chords
 - A Major – constructed with notes A, C#, E
 - B Major – constructed with notes B, D#, F#
- Minor Chords
 - e minor – constructed with notes E, G, B
 - f# minor – constructed with notes F#, A, C#
- Minor Flat Five Chords
 - C#m $\flat 5$ – constructed with notes C#, E, G
 - D#m $\flat 5$ – constructed with notes D#, F# A
- Augmented Chord
 - G+5 – constructed with notes G, B, D#

FOUR-PART HARMONY

- Dominant Seventh Chords
 - A7 – constructed with notes A, C#, E, G
 - B7 – constructed with notes B, D#, F#, A
- Minor Seventh Chord
 - f# min7 – constructed with notes F#, A, C#, E
- Minor Major Seventh Chord
 - em Maj7 – constructed with notes E, G, B, D#
- Minor Seven Flat Five Chords
 - C#m7 $\flat 5$ – constructed with notes C#, E, G, B
 - D#m7 $\flat 5$ – constructed with notes D#, F#, A, C#
- Major Seven Flat Five Chord
 - GMaj7+5 – constructed with notes G, B, D#, F#

ALL OF THE CHORDS
IN THE KEY OF
E MELODIC MINOR

D#mb5	D#7-5
D# -5	D#7+5
D# +	D# -9+5
D#m7b5	D# -9-5

C#mb5
C#m7b5
C#m7b5sus4

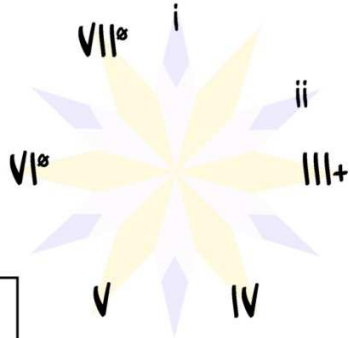
B5	B add9
B Major	B7+5
Bsus	B9
Bsus2	B9+5
B+	B11
B2	B add11
B7	B7add11
B7sus	

E5	em6
e minor	em add9
Esus	em Maj9
Esus2	e m6/9
em Maj7	em add11

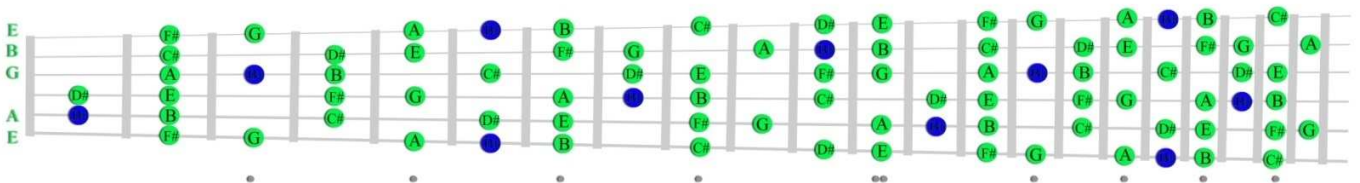
F#5
f# minor
F#sus
F#7sus
f# m7
f# m6
f#m add11
f#m addb9
f#m7 add11

G+
G -5
G Maj7-5
G Maj7+5

A5	A6	A 7/13
A Major	A add9	A9-5
Asus2	A7-5	A +11
A -5	A9	A 9/6
A2	A 6/9	A13+11
A7	A 7/6	



E Melodic Minor Blues (add the note Bb in e melodic minor mode)



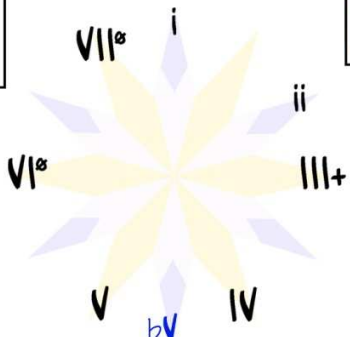
ALL OF THE CHORDS USING THE BLUE
NOTE Bb IN E MELODIC MINOR BLUES

D#5	D# 7+9
D# Major	D# 7-9
d# minor	D# -9+11
D#7	D# addb9
d# m7	d#m addb9

E mb5
E dim7

F# Major	F# 7/6
F#6	F# 7/13
F#7	F# 7-9
F# add11	F# 7+9
F# add b9	F# 11-9
F#7 add11	F# 13-9

C# dim7



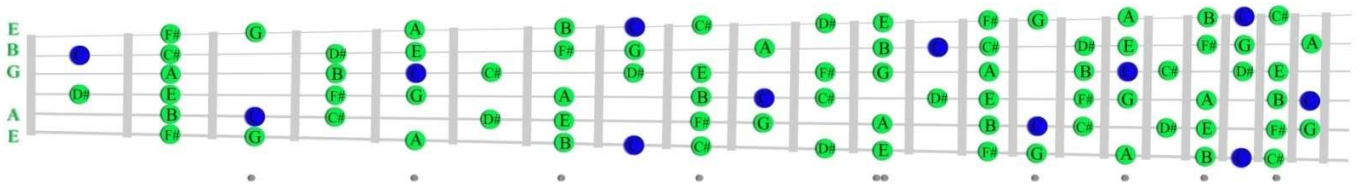
G mb5
G dim7

B Maj7
B Maj7+5
B Maj9
BMaj7 add11
B Maj11

Bb mb5
Bb dim7

A 7-9
A -9-5
A addb9
A -9+11
A 13-9+11

F# Dorian $\flat 2$ Blues (add the note $C\sharp$ in f# dorian $\flat 2$ mode)

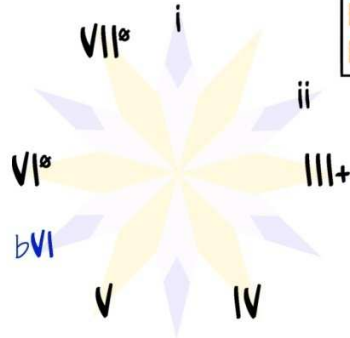


ALL OF THE CHORDS THAT CAN BE CONSTRUCTED USING THE BLUE NOTE $C\sharp$ IN F# DORIAN $\flat 2$ BLUES

D# dim7

C5	C6
C Major	c m6
c minor	C dim7
C $m\flat 5$	C Maj7-5
C -5	C add $\flat 9$
C Maj7	cm add $\flat 9$
cm Maj7	

B add $\flat 9$	B -9+5
B 7-9	B 11-9



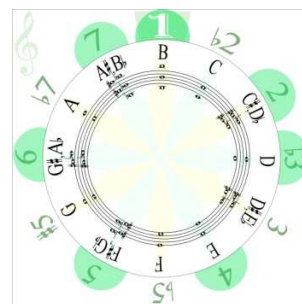
F# $m\flat 5$
 F# dim7
 F# m7 $\flat 5$
 F# m7 $\flat 5$ sus4

g minor	gm add9	gm 6/9
G $m\flat 5$	G dim7	G 7+9
g m6	Gm7 $\flat 5$	
g m7	g m9	

B MELODIC MINOR

Notes in this key; (B, C#, D, E, F#, G#, A#)

In the open range (within the first four frets), the B melodic minor scale can be played from B to B in one octave.



Notes –

- The key of B melodic minor has four sharps; C#, F#, G#, A#.

THREE-PART HARMONY

- Major Chords

E Major – constructed with notes E, G#, B

F# Major – constructed with notes F#, A#, C#

- Minor Chords

b minor – constructed with notes B, D, F#

c# minor – constructed with notes C#, E, G#

- Minor Flat Five Chords

G#m b5- constructed with notes G#, B, D

A#m b5 – constructed with notes A#, C#, E

- Augmented Chord

D+5 – constructed with notes D, F#, A#

FOUR-PART HARMONY

- Dominant Seventh Chords

E7- constructed with notes E, G#, B, D

F#7 – constructed with notes F#, A#, C#, E

- Minor Seventh Chord

c# min7 – constructed with notes C#, E, G#, B

- Minor Major Seventh Chord

bm Maj7 – constructed with notes B, D, F#, A#

- Minor Seven Flat Five Chords

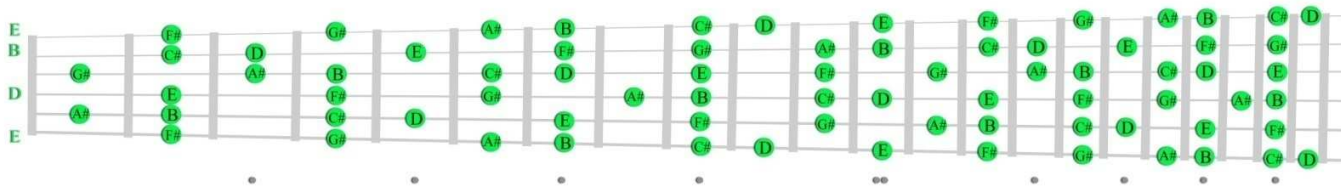
G#m7 b5- constructed with notes G#, B, D, F#

A#m7 b5 – constructed with notes A#, C#, E, G#

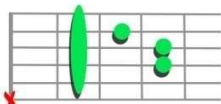
- Major Seven Flat Five Chord

DMaj7+5 – constructed with notes D, F#, A#, C#

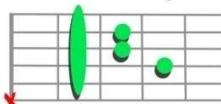
Key of b melodic minor



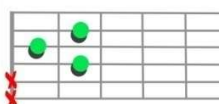
b minor



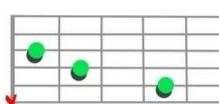
bm Maj⁷



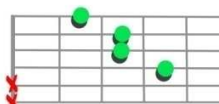
c# minor



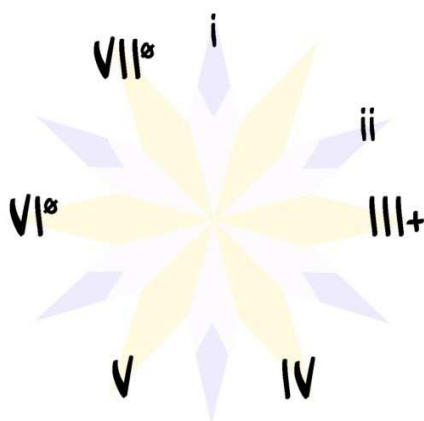
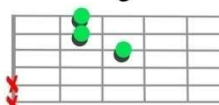
c# min⁷



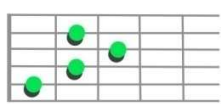
D+



DMaj⁷+5



A#mb5



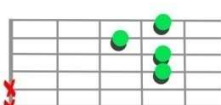
A#m⁷b5



G#mb5



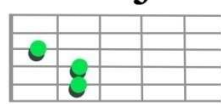
G#m⁷b5



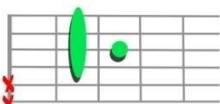
F# Major



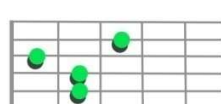
E Major



F#⁷



E⁷



Modes; b melodic minor, c# dorian ^b2, D Augmented, E Lydian ^b7, F# Hindu, g# aeolian ^b5, A# Super Locrian

ALL OF THE CHORDS
IN THE KEY OF
B MELODIC MINOR

A#m ^b 5	A#7-5
A# -5	A#7+5
A# +	A# -9+5
A#m7 ^b 5	A# -9-5

G#m ^b 5
G#m7 ^b 5
G#m7 ^b 5sus4

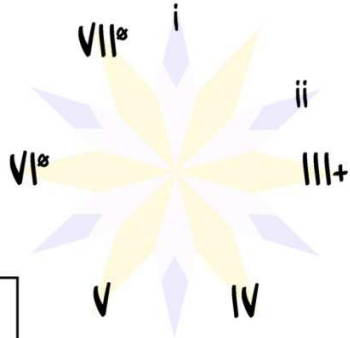
F#5	F# add9
F# Major	F#7+5
F#sus	F#9
F#sus2	F#9+5
F#+	F#11
F#2	F# add11
F#7	F#7add11
F#7sus	

B5	bm6
b minor	bm add9
Bsus	bm Maj9
Bsus2	b m6/9
bm Maj7	bm add11

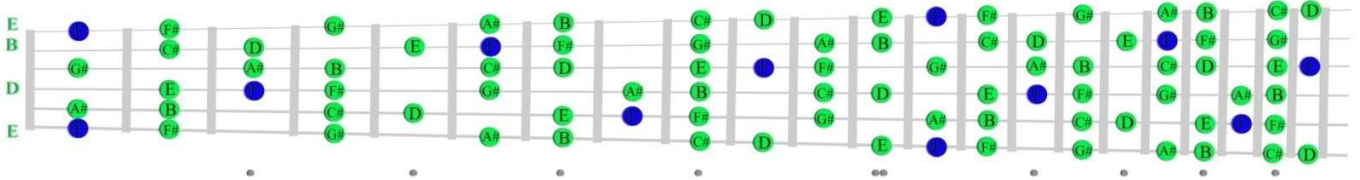
C#5
c# minor
C#sus
C#7sus
c# m7
c# m6
c#m add11
c#m add ^b 9
c#m7 add11

D+
D -5
D Maj7-5
D Maj7+5

E5	E6	E 7/13
E Major	E add9	E9-5
Esus2	E7-5	E +11
E -5	E9	E 9/6
E2	E 6/9	E13+11
E7	E 7/6	



B Melodic Minor Blues (add the note F_b in b melodic minor mode)



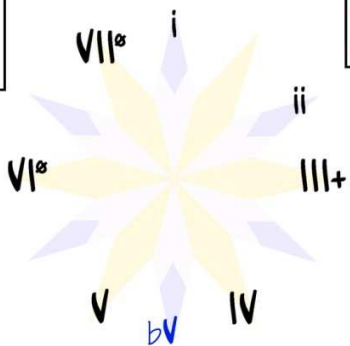
ALL OF THE CHORDS USING THE BLUE
NOTE F_b IN B MELODIC MINOR BLUES

A#5	A# 7+9
A# Major	A# 7-9
a# minor	A# -9+11
A#7	A# add ^b 9
a# m7	a#m add ^b 9

B m ^b 5
B dim7

C# Major	C# 7/6
C#6	C# 7/13
C#7	C# 7-9
C# add11	C# 7+9
C# add ^b 9	C# 11-9
C#7 add11	C# 13-9

G# dim7



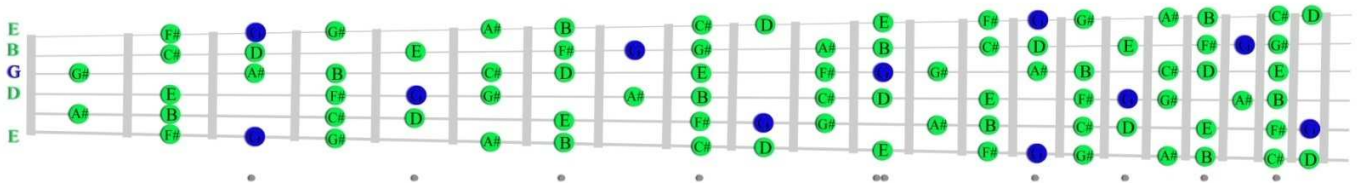
D m ^b 5
D dim7

F# Maj7
F# Maj7+5
F# Maj9
F#Maj7 add11
F# Maj11

F m ^b 5
F dim7

E 7-9
E -9-5
E add ^b 9
E -9+11
E 13-9+11

C# Dorian $b2$ Blues (add the note $G\flat$ in c# dorian $b2$ mode)

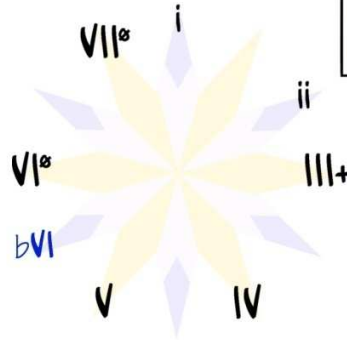


ALL OF THE CHORDS THAT CAN BE CONSTRUCTED USING THE BLUE NOTE $G\flat$ IN C# DORIAN $b2$ BLUES

A# dim7

G5	G6
G Major	g m6
g minor	G dim7
G $mb5$	G Maj7-5
G -5	G add $b9$
G Maj7	gm add $b9$
gm Maj7	

F# add $b9$	F# -9+5
F# 7-9	F# 11-9



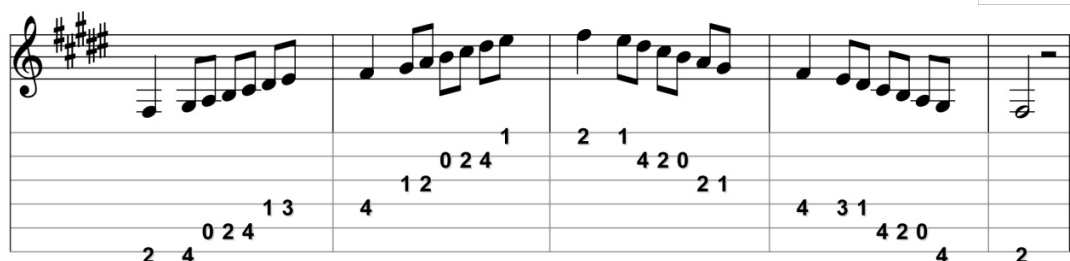
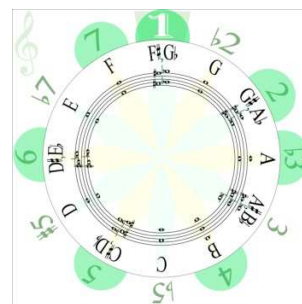
C# $mb5$
C# dim7
C# $m7b5$
C# $m7b5sus4$

e minor	em add9	em 6/9
E $mb5$	E dim7	E 7+9
e m6	Em7 $b5$	
e m7	e m9	

F# MELODIC MINOR

Notes in this key; (F#, G#, A, B, C#, D#, F)

In the open range (within the first four frets), the F# melodic minor scale can be played from F# to F# in two octaves.



Notes –

- The key of F# melodic minor has five sharps; F#, G#, C#, D#, E#

THREE-PART HARMONY

- Major Chords

B Major – constructed with notes B, D#, F#

C# Major – constructed with notes C#, E#, G#

- Minor Chords

f# minor – constructed with notes F#, A, C#

g# minor – constructed with notes G#, B, D#

- Minor Flat Five Chords

D#m b5- constructed with notes D#, F#, A

E#m b5 – constructed with notes E#, G#, B

- Augmented Chord

A+5 – constructed with notes A, C#, E#

FOUR-PART HARMONY

- Dominant Seventh Chords

B7- constructed with notes B, D#, F#, A

C#7 – constructed with notes C#, E#, G#, B

- Minor Seventh Chord

g# min7 – constructed with notes G#, B, D#, F#

- Minor Major Seventh Chord

f#m Maj7 – constructed with notes F#, A, C#, E#

- Minor Seven Flat Five Chords

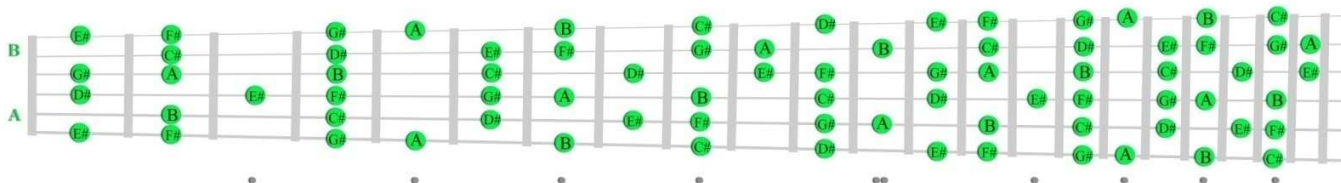
D#m7 b5- constructed with notes D#, F#, A, C#

E#m7 b5 – constructed with notes E#, G#, B, D#

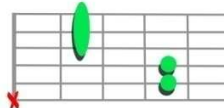
- Major Seven Flat Five Chord

AMaj7+5 – constructed with notes A, C#, E#, G#

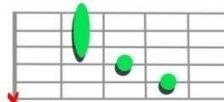
Key of f# melodic minor



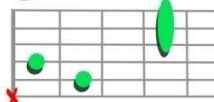
f# minor



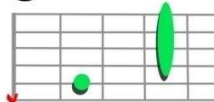
f#m Maj⁷



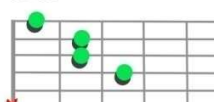
g# minor



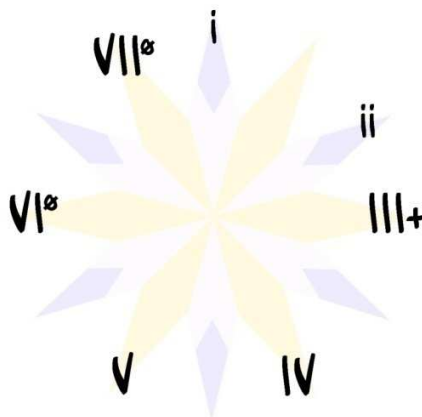
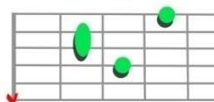
g# min⁷



A+



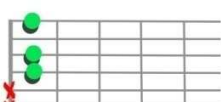
AMaj⁷+5



E#m^b5



E#m⁷b5



D#m^b5



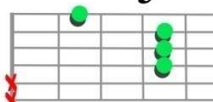
D#m⁷b5



C# Major



B Major



C#⁷



B⁷



Modes; f# melodic minor, g# dorian ^b2, A Augmented, B Lydian ^b7, C# Hindu, d# aeolian ^b5, E# Super Locrian

ALL OF THE CHORDS
IN THE KEY OF
F# MELODIC MINOR

E#mb5	E#7-5
E# -5	E#7+5
E# +	E# -9+5
E#m7b5	E# -9-5

D#mb5
D#m7b5
D#m7b5sus4

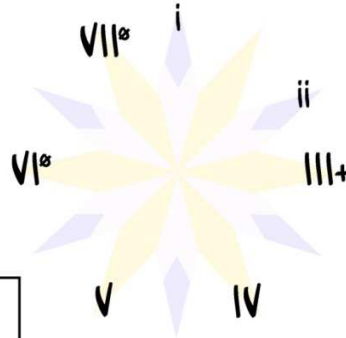
C#5	C# add9
C# Major	C#7+5
C#sus	C#9
C#sus2	C#9+5
C#+	C#11
C#2	C# add11
C#7	C#7add11
C#7sus	

F#5	f#m6
f# minor	f#m add9
F#sus	f#m Maj9
F#sus2	f# m6/9
f#m Maj7	f#m add11

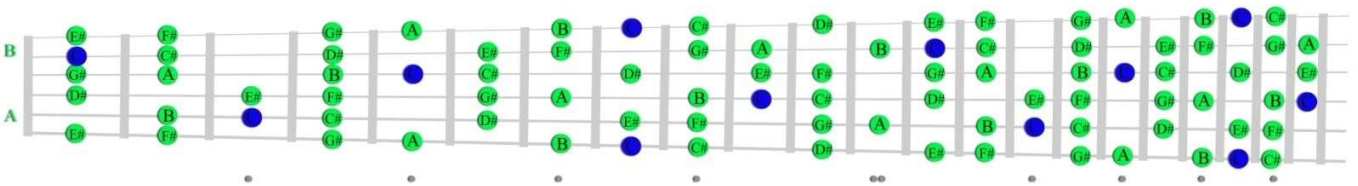
G#5
g# minor
G#sus
G#7sus
g# m7
g# m6
g#m add11
g#m addb9
g#m7 add11

A+
A -5
A Maj7-5
A Maj7+5

B5	B6	B 7/13
B Major	B add9	B9-5
Bsus2	B7-5	B +11
B -5	B9	B 9/6
B2	B 6/9	B13+11
B7	B 7/6	



F# Melodic Minor Blues (add the note C# in f# melodic minor mode)



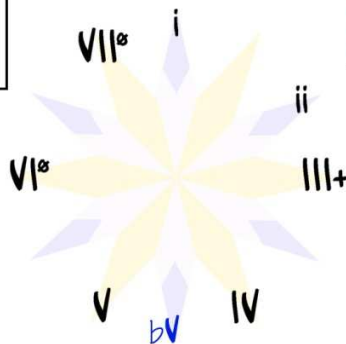
ALL OF THE CHORDS USING THE BLUE
NOTE C# IN F# MELODIC MINOR BLUES

E#5	E# 7+9
E# Major	E# 7-9
e# minor	E# -9+11
E#7	E# addb9
e# m7	e#m addb9

F# mb5
F# dim7

G# Major	G# 7/6
G#6	G# 7/13
G#7	G# 7-9
G# add11	G# 7+9
G# add b9	G# 11-9
G#7 add11	G# 13-9

D# dim7



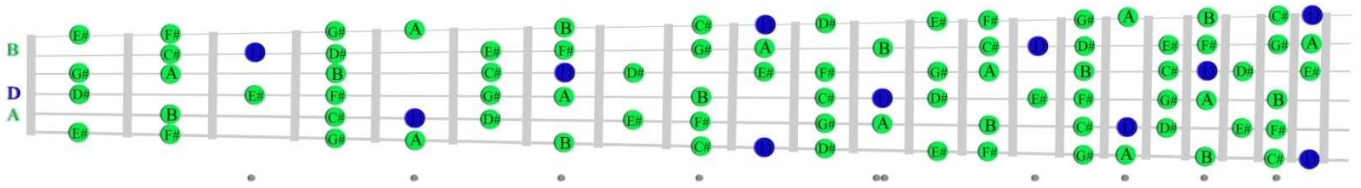
A mb5
A dim7

C# Maj7
C# Maj7+5
C# Maj9
C#Maj7 add11
C# Maj11

C mb5
C dim7

B 7-9
B -9-5
B addb9
B -9+11
B 13-9+11

G# Dorian b2 Blues (add the note D^b in g# dorian b2 mode)

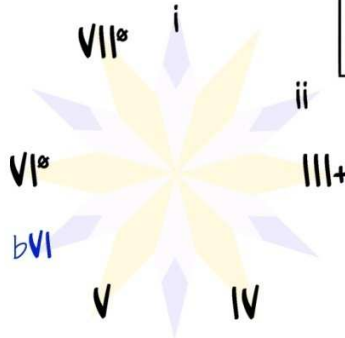


ALL OF THE CHORDS THAT CAN BE CONSTRUCTED USING THE BLUE NOTE D^b IN G# DORIAN b2 BLUES

E# dim7

G# m^b5
G# dim7
G# m7^b5
G# m7^b5sus4

D5	D6
D Major	d m6
d minor	D dim7
D m ^b 5	D Maj7-5
D -5	D add ^b 9
D Maj7	dm add ^b 9
dm Maj7	



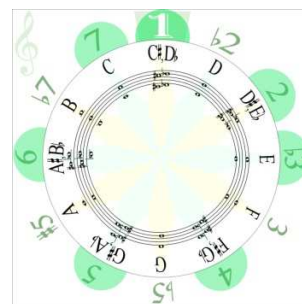
C# add^b9 C# -9+5
C# 7-9 C# 11-9

b minor	bm add9	bm 6/9
B m ^b 5	B dim7	B 7+9
b m6	Bm7 ^b 5	
b m7	b m9	

C# MELODIC MINOR

Notes in this key; (C#, D#, E, F#, G#, A#, B#)

In open range (within the first four frets), the C# melodic minor scale can be played from C# to C# in one octave.



Notes –

- The key of C melodic minor has six sharps; C#, D#, F#, G#, A#, B#.

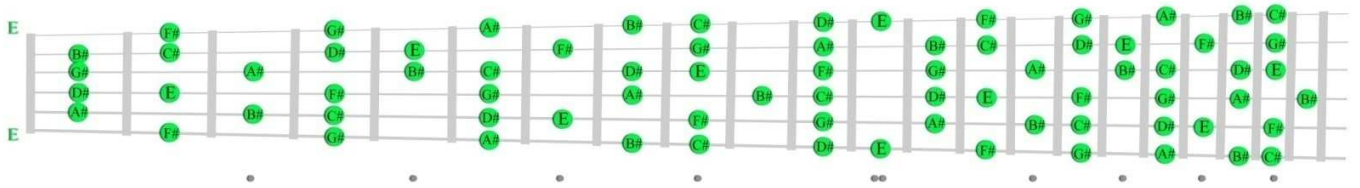
THREE-PART HARMONY

- Major Chords
 - F# Major – constructed with notes F#, A#, C#
 - G# Major – constructed with notes G#, B#, D#
- Minor Chords
 - c# minor – constructed with notes C#, E, G#
 - d# minor – constructed with notes D#, F#, A#
- Minor Flat Five Chords
 - A#m $\flat 5$ – constructed with notes A#, C#, E
 - B#m $\flat 5$ – constructed with notes B#, D#, F#
- Augmented Chord
 - E+5 – constructed with notes E, G#, B#

FOUR-PART HARMONY

- Dominant Seventh Chords
 - F#7- constructed with notes F#, A#, C#, E
 - G#7 – constructed with notes G#, B#, D#, F#
- Minor Seventh Chord
 - d# min7 – constructed with notes D#, F#, A#, C#
- Minor Major Seventh Chord
 - c#m Maj7 – constructed with notes C#, E, G#, B#
- Minor Seven Flat Five Chords
 - A#m7 $\flat 5$ – constructed with notes A#, C#, E, G#
 - B#m7 $\flat 5$ – constructed with notes B#, D#, F#, A#
- Major Seven Flat Five Chord
 - EMaj7+5 – constructed with notes E, G#, B#, D#

Key of c# melodic minor



	<p>c# minor</p>		
	<p>c#m Maj⁷</p>		
<p>B#m^b5</p>		<p>d# minor</p>	
<p>B#m⁷b5</p>		<p>d# min⁷</p>	
<p>A#m^b5</p>			<p>E+</p>
<p>A#m⁷b5</p>		<p>EMaj⁷+5</p>	
<p>G#</p>		<p>F#</p>	
<p>G#⁷</p>		<p>F#⁷</p>	

Modes; c# melodic minor, d# dorian ^b2, E Augmented, F# Lydian ^b7, G# Hindu, a# aeolian ^b5, B# Super Locrian

ALL OF THE CHORDS
IN THE KEY OF
C# MELODIC MINOR

B#mb5	B#7-5
B# -5	B#7+5
B# +	B# -9+5
B#m7b5	B# -9-5

A#mb5
A#m7b5
A#m7b5sus4

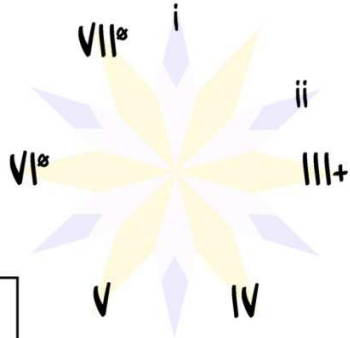
G#5	G# add9
G# Major	G#7+5
G#sus	G#9
G#sus2	G#9+5
G#+	G#11
G#2	G# add11
G#7	G#7add11
G#7sus	

C#5	c#m6
c# minor	c#m add9
C#sus	c#m Maj9
C#sus2	c# m6/9
c#m Maj7	c#m add11

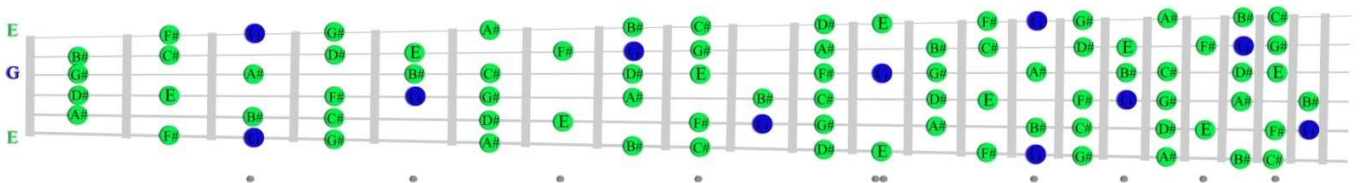
D#5
d# minor
D#sus
D#7sus
d# m7
d# m6
d#m add11
d#m addb9
d#m7 add11

E+
E -5
E Maj7-5
E Maj7+5

F#5	F#6	F# 7/13
F# Major	F# add9	F#9-5
F#sus2	F#7-5	F# +11
F# -5	F#9	F# 9/6
F#2	F# 6/9	F#13+11
F#7	F# 7/6	



C# Melodic Minor Blues (add the note Gb in c# melodic minor mode)



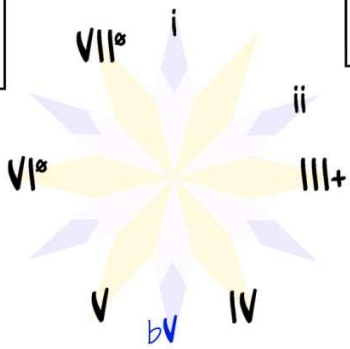
ALL OF THE CHORDS USING THE BLUE
NOTE Gb IN C# MELODIC MINOR BLUES

B#5	B# 7+9
B# Major	B# 7-9
b# minor	B# -9+11
B#7	B# addb9
b# m7	b#m addb9

C# mb5
C# dim7

D# Major	D# 7/6
D#6	D# 7/13
D#7	D# 7-9
D# add11	D# 7+9
D# add b9	D# 11-9
D#7 add11	D# 13-9

A# dim7



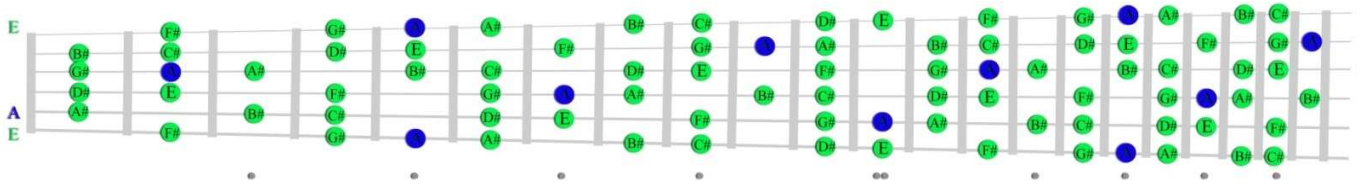
E mb5
E dim7

G# Maj7
G# Maj7+5
G# Maj9
G#Maj7 add11
G# Maj11

G mb5
G dim7

F# 7-9
F# -9-5
F# addb9
F# -9+11
F# 13-9+11

D# Dorian b2 Blues (add the note A^b in d# dorian b2 mode)

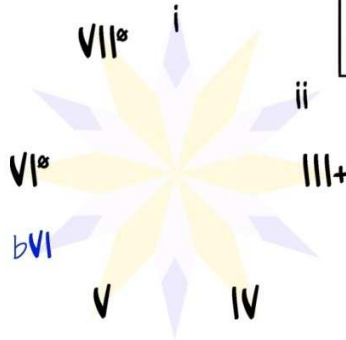


ALL OF THE CHORDS THAT CAN BE CONSTRUCTED USING THE BLUE NOTE A^b IN D# DORIAN b2 BLUES

B# dim7

D# m^b5
 D# dim7
 D# m7^b5
 D# m7^b5sus4

A5	A6
A Major	a m6
a minor	A dim7
A m ^b 5	A Maj7-5
A -5	A add ^b 9
A Maj7	am add ^b 9
am Maj7	



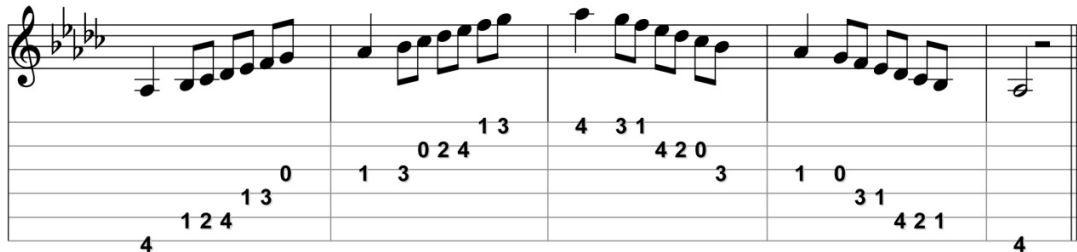
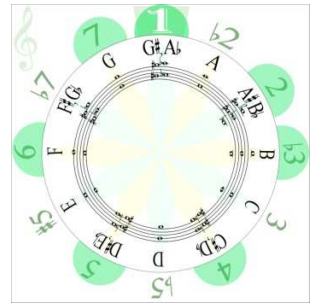
G# add ^b 9	G# -9+5
G# 7-9	G# 11-9

f# minor	f#m add9	f#m 6/9
F# m ^b 5	F# dim7	F# 7+9
f# m6	F#m7 ^b 5	
f# m7	f# m9	

A \flat MELODIC MINOR

Notes in this key; (A \flat , B \flat , C \flat , D \flat , E \flat , F, G)

In the open range (within the first four frets), the A \flat melodic minor scale can be played from A \flat to A \flat in two octaves.



Notes –

- The key of A \flat melodic minor has five flats; A \flat , B \flat , C \flat , D \flat , E \flat .

THREE-PART HARMONY

- Major Chords
 - D \flat Major – constructed with notes D \flat , F, A \flat
 - E \flat Major – constructed with notes E \flat , G, B \flat
- Minor Chords
 - a \flat minor – constructed with notes A \flat , C \flat , E \flat
 - b \flat minor – constructed with notes B \flat , D \flat , F
- Minor Flat Five Chords
 - Fm \flat 5- constructed with notes F, A \flat , \flat C
 - Gm \flat 5 – constructed with notes G, B \flat , D \flat
- Augmented Chord
 - C \flat +5 – constructed with notes C \flat , E \flat , G

FOUR-PART HARMONY

- Dominant Seventh Chords
 - D \flat 7- constructed with notes D \flat , F, A \flat , C \flat
 - E \flat 7 – constructed with notes E \flat , G, B \flat , D \flat
- Minor Seventh Chord
 - b \flat min7 – constructed with notes B \flat , D \flat , F, A \flat
- Minor Major Seventh Chord
 - a \flat m Maj7 – constructed with notes A \flat , C \flat , E \flat , G
- Minor Seven Flat Five Chords
 - Fm7 \flat 5- constructed with notes F, A \flat , C \flat , E \flat
 - Gm7 \flat 5 – constructed with notes G, B \flat , D \flat , F
- Major Seven Flat Five Chord
 - C \flat Maj7+5 – constructed with notes C \flat , E \flat , G, B \flat

ALL OF THE CHORDS
IN THE KEY OF
Ab MELODIC MINOR

Gmb5	G7-5
G -5	G7+5
G +	G -9+5
Gm7b5	G -9-5

Fmb5
Fm7b5
Fm7b5sus4

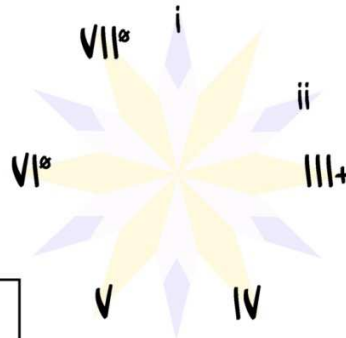
Eb5	Eb add9
Eb Major	Eb7+5
Ebsus	Eb9
Ebsus2	Eb9+5
Eb+	Eb11
Eb2	Eb add11
Eb7	Eb7add11
Eb7sus	

Ab5	abm6
ab minor	abm add9
Absus	abm Maj9
Absus2	ab m6/9
abm Maj7	abm add11

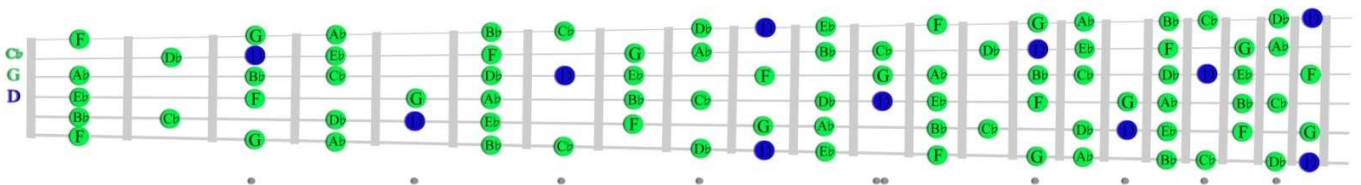
Bb5
bb minor
Bbsus
Bb7sus
bb m7
bb m6
bbm add11
bbm addb9
bbm7 add11

Cb+
Cb -5
Cb Maj7-5
Cb Maj7+5

Db5	Db6	Db 7/13
Db Major	Db add9	Db9-5
Db7sus2	Db7-5	Db +11
Db -5	Db9	Db 9/6
Db2	Db 6/9	Db13+11
Db7	Db 7/6	



Ab Melodic Minor Blues (add the note D \flat in ab melodic minor mode)



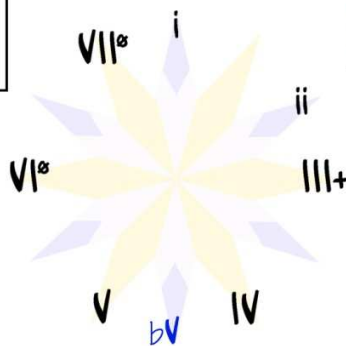
ALL OF THE CHORDS USING THE BLUE
NOTE D \flat IN Ab MELODIC MINOR BLUES

G5	G 7+9
G Major	G 7-9
g minor	G -9+11
G7	G addb9
g m7	gm addb9

Ab mb5
Ab dim7

Bb Major	Bb 7/6
Bb6	Bb 7/13
Bb7	Bb 7-9
Bb add11	Bb 7+9
Bb add b9	Bb 11-9
Bb7 add11	Bb 13-9

F dim7



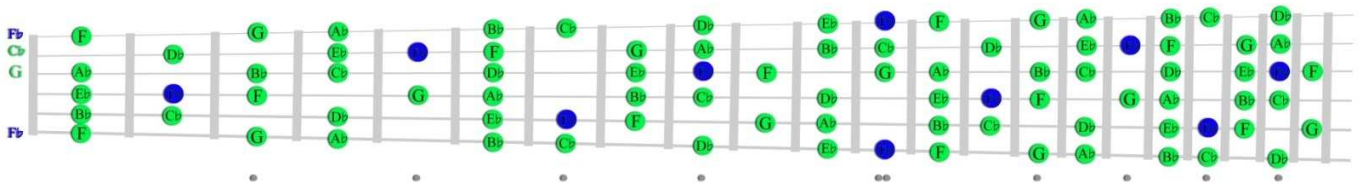
Cb mb5
Cb dim7

Eb Maj7
Eb Maj7+5
Eb Maj9
EbMaj7 add11
Eb Maj11

D mb5
D dim7

Db 7-9
Db -9-5
Db addb9
Db -9+11
Db 13-9+11

B \flat Dorian $\flat 2$ Blues (add the note F \flat in $\flat\flat$ dorian $\flat 2$ mode)

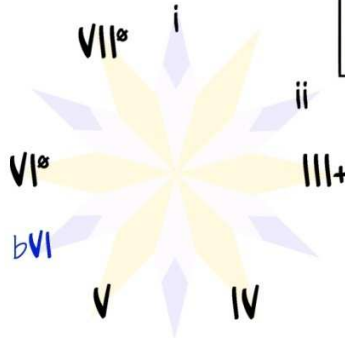


ALL OF THE CHORDS THAT CAN BE CONSTRUCTED USING THE BLUE NOTE F \flat IN B \flat DORIAN $\flat 2$ BLUES

G dim7

B \flat m $\flat 5$
 B \flat dim7
 B \flat m7 $\flat 5$
 B \flat m7 $\flat 5$ sus4

F $\flat 5$	F $\flat 6$
F \flat Major	f \flat m6
f \flat minor	F \flat dim7
F \flat m $\flat 5$	F \flat Maj7-5
F \flat -5	F \flat add $\flat 9$
F \flat Maj7	f \flat m add $\flat 9$
f \flat am Maj7	



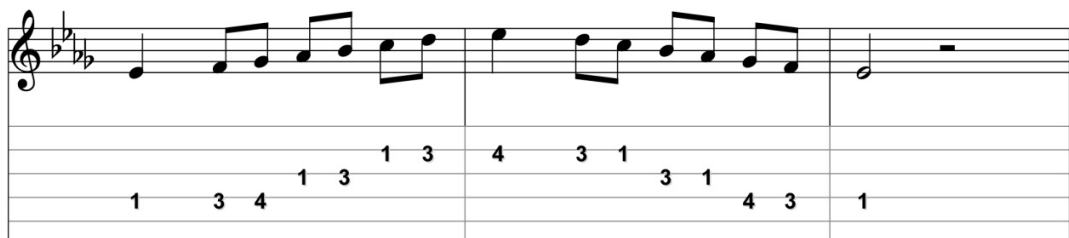
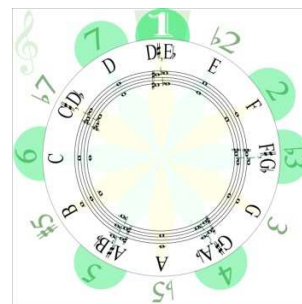
E \flat add $\flat 9$	E \flat -9+5
E \flat 7-9	E \flat 11-9

d \flat minor	d \flat m add9	d \flat m 6/9
D \flat m $\flat 5$	D \flat dim7	D \flat 7+9
d \flat m6	D \flat m7 $\flat 5$	
d \flat m7	d \flat m9	

E \flat MELODIC MINOR

Notes in this key; (E \flat , F, G \flat , A \flat , B \flat , C, D)

In the open range (within the first four frets), the E \flat melodic minor scale can be played from E \flat to E \flat in one octave range.



Notes –

- The key of E \flat melodic minor has four flats; E \flat , G \flat , A \flat , B \flat .

THREE-PART HARMONY

- Major Chords
 - A \flat Major – constructed with notes A \flat , C, E \flat
 - B \flat Major – constructed with notes B \flat , D, F
- Minor Chords
 - e \flat minor – constructed with notes E \flat , G \flat , B \flat
 - f minor – constructed with notes F, A \flat , C
- Minor Flat Five Chords
 - Cm \flat 5- constructed with notes C, E \flat , G \flat
 - Dm \flat 5 – constructed with notes D, F, A \flat
- Augmented Chord
 - G \flat +5 – constructed with notes G \flat , B \flat , D

FOUR-PART HARMONY

- Dominant Seventh Chords
 - A \flat 7- constructed with notes A \flat , C, E \flat , G \flat
 - B \flat 7 – constructed with notes B \flat , D, F, A \flat
- Minor Seventh Chord
 - f min7 – constructed with notes F, A \flat , C, E \flat
- Minor Major Seventh Chord
 - e \flat m Maj7 – constructed with notes E \flat , G \flat , B \flat , D
- Minor Seven Flat Five Chords
 - Cm7 \flat 5- constructed with notes C, E \flat , G \flat , B \flat
 - Dm7 \flat 5 – constructed with notes D, F, A \flat , C
- Major Seven Flat Five Chord
 - G \flat Maj7+5 – constructed with notes G \flat , B \flat , D, F

ALL OF THE CHORDS
IN THE KEY OF
E_b MELODIC MINOR

Dmb5	D7-5
D -5	D7+5
D +	D -9+5
Dm7b5	D -9-5

Cmb5
Cm7b5
Cm7b5sus4

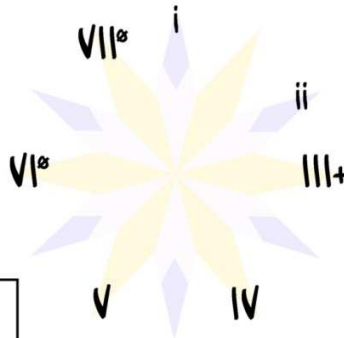
Bb5	Bb add9
Bb Major	Bb7+5
Bbsus	Bb9
Bbsus2	Bb9+5
Bb+	Bb11
Bb2	Bb add11
Bb7	Bb7add11
Bb7sus	

E _b 5	e _b m6
e _b minor	e _b m add9
E _b sus	e _b m Maj9
E _b sus2	e _b m6/9
e _b m Maj7	e _b m add11

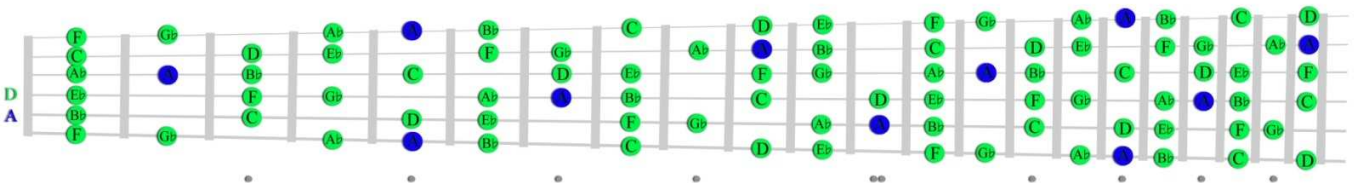
F5
f minor
Fsus
F7sus
f m7
f m6
fm add11
fm addb9
fm7 add11

G _b +
G _b -5
G _b Maj7-5
G _b Maj7+5

A _b 5	A _b 6	A _b 7/13
A _b Major	A _b add9	A _b 9-5
A _b sus2	A _b 7-5	A _b +11
A _b -5	A _b 9	A _b 9/6
A _b 2	A _b 6/9	A _b 13+11
A _b 7	A _b 7/6	



E_b Melodic Minor Blues (add the note A₄ in e_b melodic minor mode)



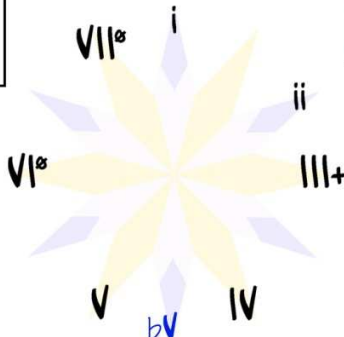
ALL OF THE CHORDS USING THE BLUE
NOTE A₄ IN E_b MELODIC MINOR BLUES

D5	D 7+9
D Major	D 7-9
d minor	D -9+11
D7	D addb9
d m7	dm addb9

E _b mb5
E _b dim7

F Major	F 7/6
F6	F 7/13
F7	F 7-9
F add11	F 7+9
F add b9	F 11-9
F7 add11	F 13-9

C dim7



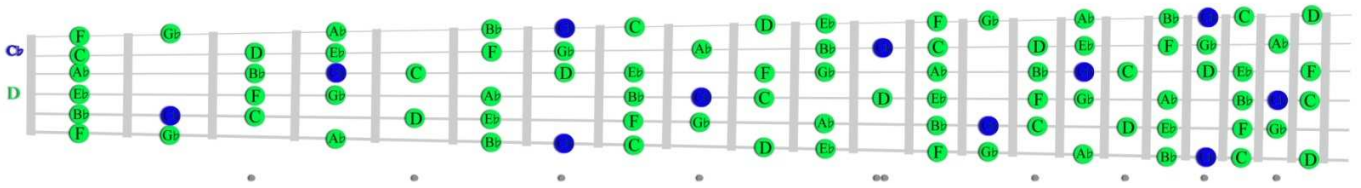
G _b mb5
G _b dim7

C Maj7
C Maj7+5
C Maj9
CMaj7 add11
C Maj11

A mb5
A dim7

A _b 7-9
A _b -9-5
A _b addb9
A _b -9+11
A _b 13-9+11

F Dorian $b2$ Blues (add the note Cb in f dorian $b2$ mode)

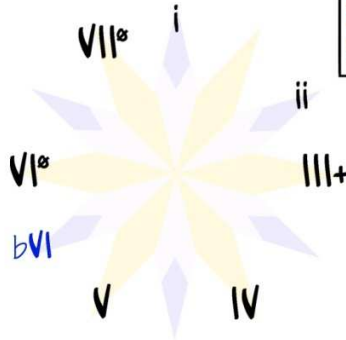


ALL OF THE CHORDS THAT CAN BE CONSTRUCTED USING THE BLUE NOTE Cb IN F DORIAN $b2$ BLUES

D dim7

C5	C6
C Major	c m6
c minor	C dim7
C $mb5$	C Maj7-5
C -5	C add $b9$
C Maj7	cm add $b9$
cm Maj7	

Bb add $b9$	Bb -9+5
Bb 7-9	Bb 11-9



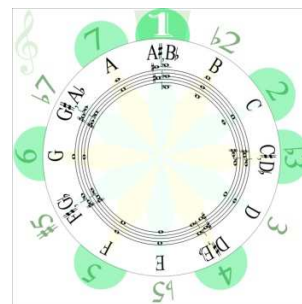
F $mb5$
F dim7
F $m7b5$
F $m7b5sus4$

ab minor	abm add9	abm 6/9
Ab $mb5$	Ab dim7	Ab 7+9
ab m6	$Abm7b5$	
ab m7	ab m9	

B \flat MELODIC MINOR

Notes in this key; (B \flat , C, D \flat , E \flat , F, G, A)

In the open range (within the first four frets), the B \flat melodic minor scale can be played from B \flat to B \flat in one octave range.



Notes –

- The key of B \flat melodic minor has three flats; B \flat , D \flat , E \flat

THREE-PART HARMONY

- Major Chords
 - E \flat Major – constructed with notes E \flat , G, B \flat
 - F Major – constructed with notes F, A, C
- Minor Chords
 - B \flat minor – constructed with notes B \flat , D \flat , F
 - c minor – constructed with notes C, E \flat , G
- Minor Flat Five Chords
 - Gm \flat 5- constructed with notes G, B \flat , D \flat
 - Am \flat 5 – constructed with notes A, C, E \flat
- Augmented Chord
 - D \flat +5 – constructed with notes D \flat , F, A

FOUR-PART HARMONY

- Dominant Seventh Chords
 - E \flat 7- constructed with notes E \flat , G, B \flat , D \flat
 - F7 – constructed with notes F, A, C, E \flat
- Minor Seventh Chord
 - c min7 – constructed with notes C, E \flat , G, B \flat
- Minor Major Seventh Chord
 - B \flat m Maj7 – constructed with notes B \flat , D \flat , F, A
- Minor Seven Flat Five Chords
 - Gm7 \flat 5- constructed with notes G, B \flat , D \flat , F
 - Am7 \flat 5 – constructed with notes A, C, E \flat , G
- Major Seven Flat Five Chord
 - D \flat Maj7+5 – constructed with notes D \flat , F, A, C

ALL OF THE CHORDS
IN THE KEY OF
B \flat MELODIC MINOR

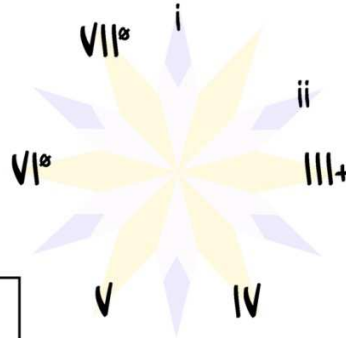
Amb5	A7-5
A-5	A7+5
A+	A-9+5
Am7 \flat 5	A-9-5

Gmb5
Gm7 \flat 5
Gm7 \flat 5sus4

F5	F add9
F Major	F7+5
Fsus	F9
Fsus2	F9+5
F+	F11
F2	F add11
F7	F7add11
F7sus	

B \flat 5	b \flat m6
b \flat minor	b \flat m add9
B \flat sus	b \flat m Maj9
B \flat sus2	b \flat m6/9
b \flat m Maj7	b \flat m add11

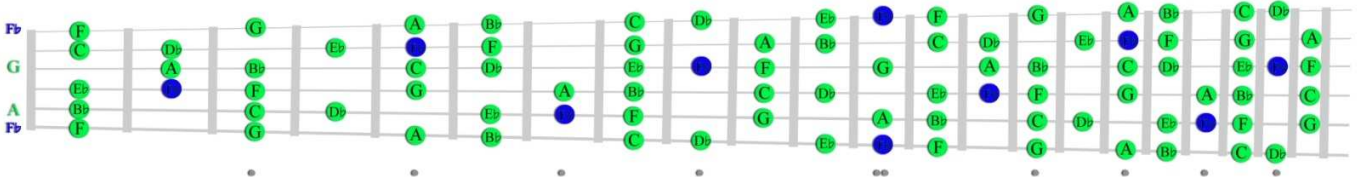
C5
c minor
Csus
C7sus
c m7
c m6
cm add11
cm add \flat 9
cm7 add11



D \flat +
D \flat -5
D \flat Maj7-5
D \flat Maj7+5

E \flat 5	E \flat 6	E \flat 7/13
E \flat Major	E \flat add9	E \flat 9-5
E \flat sus2	E \flat 7-5	E \flat +11
E \flat -5	E \flat 9	E \flat 9/6
E \flat 2	E \flat 6/9	E \flat 13+11
E \flat 7	E \flat 7/6	

B \flat Melodic Minor Blues (add the note F \flat in b \flat melodic minor mode)



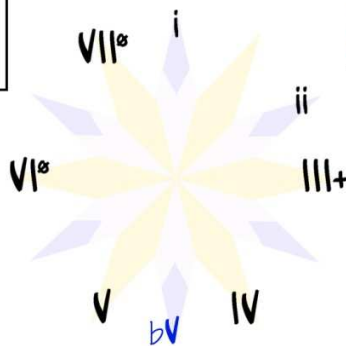
ALL OF THE CHORDS USING THE BLUE
NOTE F \flat IN B \flat MELODIC MINOR BLUES

A5	A 7+9
A Major	A 7-9
a minor	A -9+11
A7	A add \flat 9
a m7	am add \flat 9

B \flat mb5
B \flat dim7

C Major	C 7/6
C6	C 7/13
C7	C 7-9
C add11	C 7+9
C add \flat 9	C 11-9
C7 add11	C 13-9

G dim7



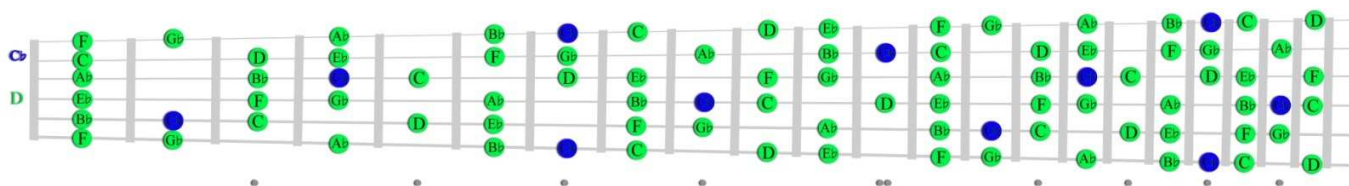
D \flat mb5
D \flat dim7

F Maj7
F Maj7+5
F Maj9
FMaj7 add11
F Maj11

F \flat mb5
F \flat dim7

E \flat 7-9
E \flat -9-5
E \flat add \flat 9
E \flat -9+11
E \flat 13-9+11

F Dorian $b2$ Blues (add the note Cb in f dorian $b2$ mode)

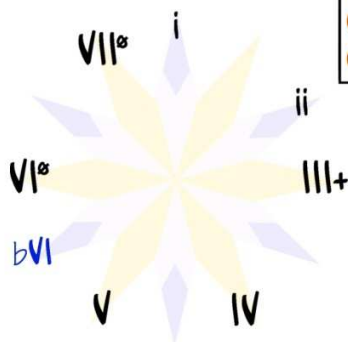


ALL OF THE CHORDS THAT CAN BE CONSTRUCTED USING THE BLUE NOTE Gb IN C DORIAN $b2$ BLUES

A dim7

$Gb5$	$Gb6$
Gb Major	gb m6
gb minor	Gb dim7
Gb mb5	Gb Maj7-5
Gb -5	Gb add $b9$
Gb Maj7	gbm add $b9$
gbm Maj7	

F add $b9$	F -9+5
F 7-9	F 11-9



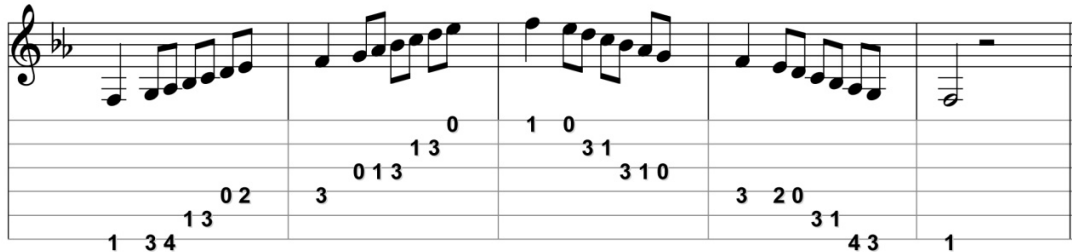
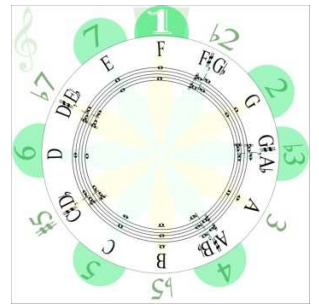
C mb5
 C dim7
 C m7 $b5$
 C m7 $b5$ sus4

eb minor	ebm add9	ebm 6/9
Eb mb5	Eb dim7	Eb 7+9
eb m6	$Ebm7b5$	
eb m7	eb m9	

F MELODIC MINOR

Notes in this key; (F, G, A \flat , B \flat , C, D, E)

In the open range (within the first four frets), the F melodic minor scale can be played from F to F in two octaves.



Notes –

- The key of F melodic minor has two flats; A \flat , B \flat

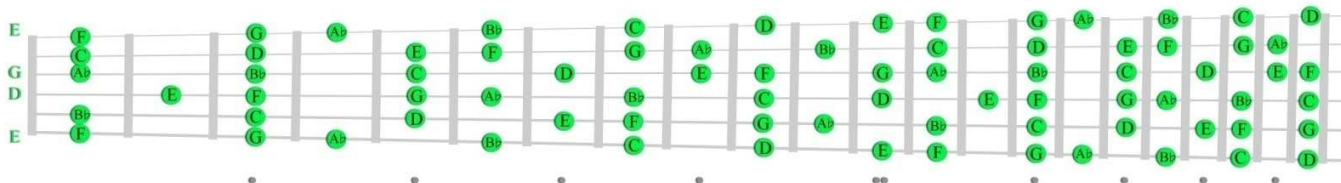
THREE-PART HARMONY

- Major Chords
 - B \flat Major* – constructed with notes B \flat , D, F
 - C Major* – constructed with notes C, E, G
- Minor Chords
 - f minor* – constructed with notes F, A \flat , C
 - g minor* – constructed with notes G, B \flat , D
- Minor Flat Five Chords
 - Dm \flat 5* – constructed with notes D, F, A \flat
 - Em \flat 5* – constructed with notes E, G, B \flat
- Augmented Chord
 - A \flat +5* – constructed with notes A \flat , C, E

FOUR-PART HARMONY

- Dominant Seventh Chords
 - B \flat 7* – constructed with notes B \flat , D, F, A \flat
 - C7* – constructed with notes C, E, G, B \flat
- Minor Seventh Chord
 - g min7* – constructed with notes G, B \flat , D, F
- Minor Major Seventh Chord
 - fm Maj7* – constructed with notes F, A \flat , C, E
- Minor Seven Flat Five Chords
 - Dm7 \flat 5* – constructed with notes D, F, A \flat , C
 - Em7 \flat 5* – constructed with notes E, G, B \flat , D
- Major Seven Flat Five Chord
 - A \flat Maj7+5* – constructed with notes A \flat , C, E, G

Key of f melodic minor



		<p>f minor</p>	
		<p>fm Maj⁷</p>	
<p>Em^b5</p>		<p>g minor</p>	
<p>Em^{7b}5</p>		<p>g min⁷</p>	
<p>Dmb⁵</p>		<p>Ab+</p>	
<p>Dm^{7b}5</p>		<p>AbMaj⁷+5</p>	
<p>C Major</p>		<p>Bb Major</p>	
<p>C⁷</p>		<p>Bb⁷</p>	

Modes; f melodic minor, g dorian ^b2, A ^b Augmented, B ^b Lydian ^b7, C Hindu, D aeolian ^b5, E Super Locrian

ALL OF THE CHORDS
IN THE KEY OF
F MELODIC MINOR

Emb5	E7-5
E -5	E7+5
E +	E -9+5
Em7b5	E -9-5

Dmb5
Dm7b5
Dm7b5sus4

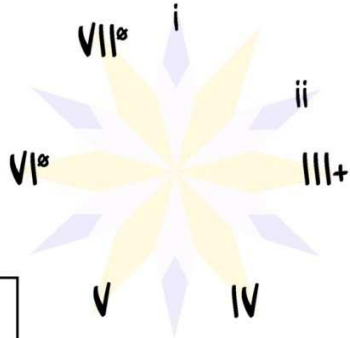
C5	C add9
C Major	C7+5
Csus	C9
Csus2	C9+5
C+	C11
C2	C add11
C7	C7add11
C7sus	

F5	fm6
f minor	fm add9
Fsus	fm Maj9
Fsus2	f m6/9
fm Maj7	fm add11

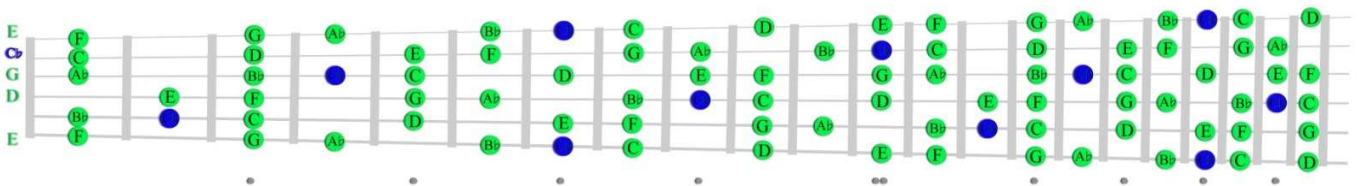
G5
g minor
Gsus
G7sus
g m7
g m6
gm add11
gm addb9
gm7 add11

Ab+
Ab -5
Ab Maj7-5
Ab Maj7+5

Bb5	Bb6	Bb 7/13
Bb Major	Bb add9	Bb9-5
Bbsus2	Bb7-5	Bb +11
Bb -5	Bb9	Bb 9/6
Bb2	Bb 6/9	Bb13+11
Bb7	Bb 7/6	



F Melodic Minor Blues (add the note Cb in f melodic minor mode)



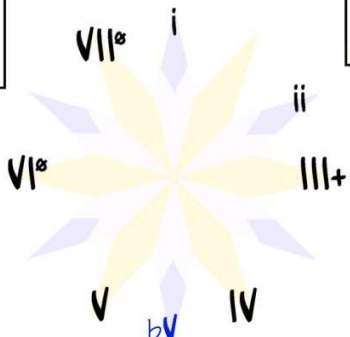
ALL OF THE CHORDS USING THE BLUE
NOTE Cb IN F MELODIC MINOR BLUES

E5	E 7+9
E Major	E 7-9
e minor	E -9+11
E7	E addb9
e m7	em addb9

F mb5
F dim7

G Major	G 7/6
G6	G 7/13
G7	G 7-9
G add11	G 7+9
G add b9	G 11-9
G7 add11	G 13-9

D dim7



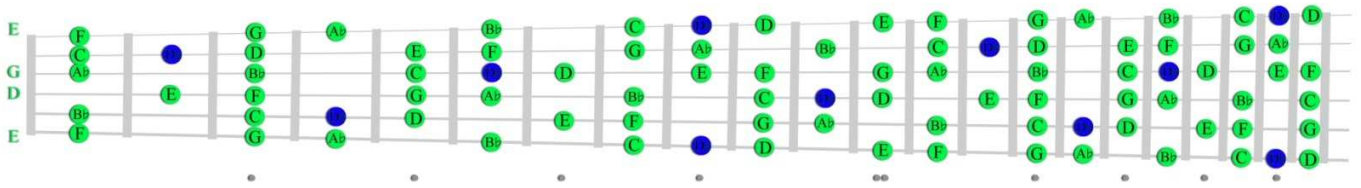
Ab mb5
Ab dim7

C Maj7
C Maj7+5
C Maj9
CMaj7 add11
C Maj11

Cb mb5
Cb dim7

Bb 7-9
Bb -9-5
Bb addb9
Bb -9+11
Bb 13-9+11

G Dorian $b2$ Blues (add the note D_b in g dorian $b2$ mode)

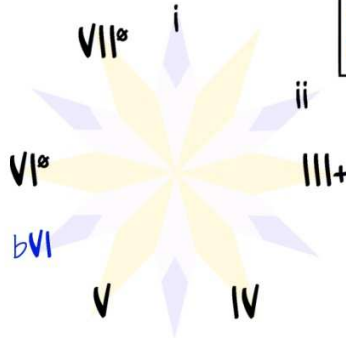


ALL OF THE CHORDS THAT CAN BE CONSTRUCTED USING THE BLUE NOTE D_b IN G DORIAN $b2$ BLUES

E dim7

G m_b5
G dim7
G $m7_b5$
G $m7_b5sus4$

D_b5	D_b6
D_b Major	$d_b m6$
d_b minor	D_b dim7
$D_b m_b5$	D_b Maj7-5
$D_b -5$	D_b add $b9$
D_b Maj7	$d_b m$ add $b9$
$d_b m$ Maj7	



C add $b9$	C -9+5
C 7-9	C 11-9

b_b minor	$b_b m$ add9	$b_b m$ 6/9
$B_b m_b5$	B_b dim7	B_b 7+9
$b_b m6$	$B_b m7_b5$	
$b_b m7$	$b_b m9$	